



URBAN DISPOSAL SOLUTIONS

Disposal of waste is not the end, it's a new beginning!
DownWaste equips modern buildings with a sustainable waste management system.

Waste Chutes
Waste Compaction
Sorting and Storage
Maintenance &
Repair Services





About **DownWaste**

DownWaste “Urban Disposal Solutions” is created with the goal of supplying the waste disposal infrastructure for modern buildings.

We offer you a comprehensive set of high quality products for both residential and commercial buildings. These applications include waste, laundry, and recycling chutes for easy disposal, indoor sorting tables and balers for handling all kinds of recyclables as well as compactors, bins and trolleys for proper storage and handling of waste or laundry of various sizes and capacities.

We are driven by passion and a strong motivation to create quality products which significantly contribute to urban waste disposal. We strive to tailor our product offerings to the most exacting standards at highly competitive prices. We have established a number of partnerships under the trademark of DownWaste as to guarantee our local or regional presence to enhance our understanding of the requirements of our clients.

We currently have manufacturing facilities located in Oman and Turkey, from where we are able to deliver our products efficiently. We are utilizing our Turkish manufacturing facility and engineering capabilities to deliver quality compactors, balers and other waste management equipment.

Waste Chutes

Our urban disposal solutions significantly contribute to effective and efficient waste management, and enhance the well-being of residents and building operators. Our solutions are always environmentally sustainable and in compliance with the local regulations.

Although disposal is about getting rid of something without a return, our experience demonstrates that sustainable management of household waste can result in more benefits for our customers.



Increased productivity

Less time spent on waste collection means more time for the staff to concentrate on other activities.



Improved hygiene

In order to prevent bad odors and bacteria from flourishing in the chute, we reconsidered the waste handling strategies and equipped the internal waste handling process with advanced automatic cleaning systems.



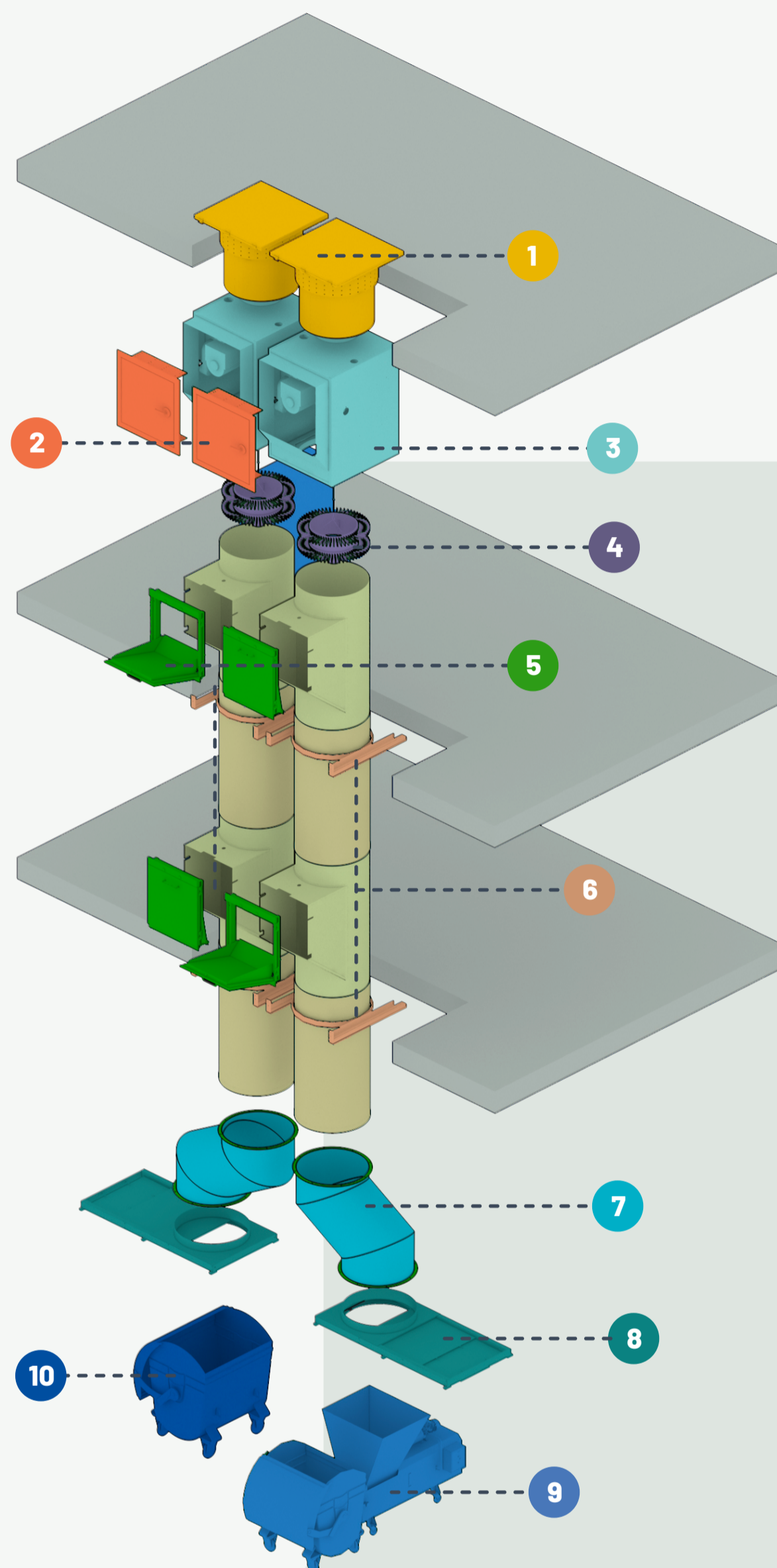
Whisper, whisper

We designed a quiet and sophisticated system to work for your building or hotel. Our chutes are isolated with anti-vibration rubber pads and coated with sound dampening paint and aluminium foil fiberglass wool.



Safety first

We deploy UL 10B 90 Minutes Fire Rated Door Assemblies with automatic electric strike locks for ultimate safety of residents and building operators alike. The simple to use automatic control unit was designed to undertake all operations safely and quickly.



- 1 Blast Vent Cap
- 2 Access Door
- 3 Cleaning System
- 4 Brush Unit
- 5 Hopper Doors
- 6 Support Frames
- 7 Chute Offset
- 8 Fire Damper
- 9 Chute Fed Compactor
- 10 Heavy Duty Waste Trolley



The chute trunk has a smooth surface and is welded seamlessly with an automated TIG* welding machine and is also leakproof. There are no bolts, rivets nor projections protruding into the chute.

*An arc welding process that uses a non-consumable tungsten electrode to produce the weld that is protected from oxidation or other atmospheric contamination by an inert shielding gas.

- D** A minimum 2mm Sound deadening coating applied on the exterior of the chute in order to inhibit any unwanted noise from falling garbage inside the chute. Optionally, an extra 25mm foil faced fiberglass insulation coating is wrapped around the exterior of the chute.

A Chutes diameters (mm):

500

600

700

800

B DownWaste Chutes provide the following thicknesses (mm):

1.29

1.5

2

2.5

C Chutes for either trash or linens/laundry are made from the following materials:

SS 304

SS316

SS430

GI or Galvalume

600mm diameter, 1.5mm thick S 304 grade stainless steel is standard, we recommend stainless steel due to its resistance to alkalis, acids and humidity which may occur in waste chutes.



- ✓ Designed to be ergonomic and easy to operate.
- ✓ 100% Stainless Steel facing and handle.
- ✓ Self-closes slowly and silently.
- ✓ Electrically interlocking 24V.
- ✓ Complies with the NFPA requirements and 10B fire rated for 90 minutes.
- ✓ 3D Volume controlled chambers prevent the large bags from clogging the chute.





Available Sizes:

12"x12" (300x300 mm)

15"x15" (395x395 mm)

15"x18" (395x450mm)

15"x24" (395x600mm)

18"x18" (450x450mm)

- A** Hand Operated with Smooth Self Closing Gas Springs
- B** Stainless Steel Heavy Duty Pull Handle
- C** 100% Monoblock Stainless Steel Satin Finish Door and Frame
- D** Optional Foot Pedal
- E** 24V Electric Strike Lock*
- F** 24V Green and Red Led Indicator Lights



“

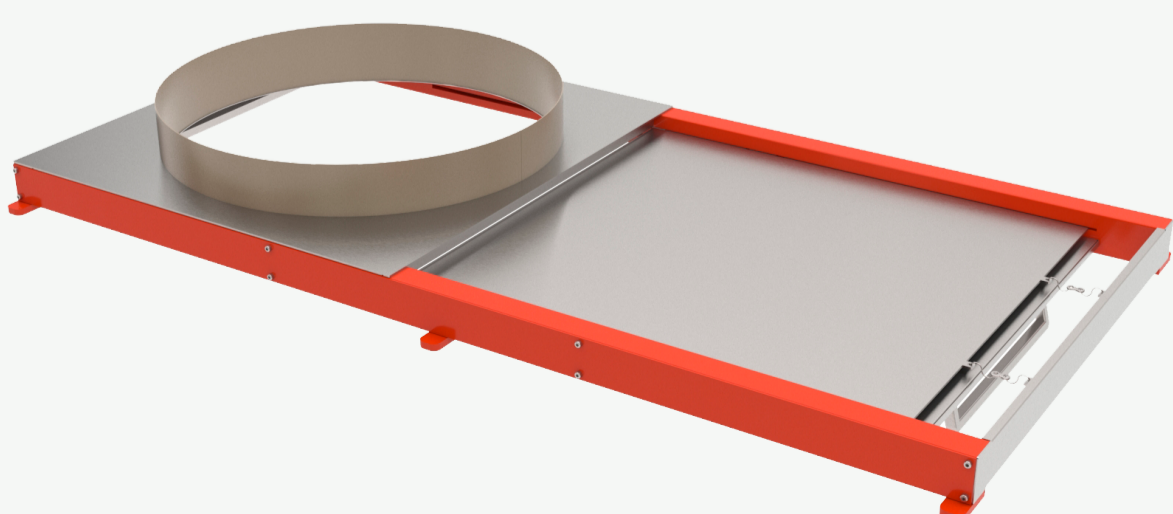
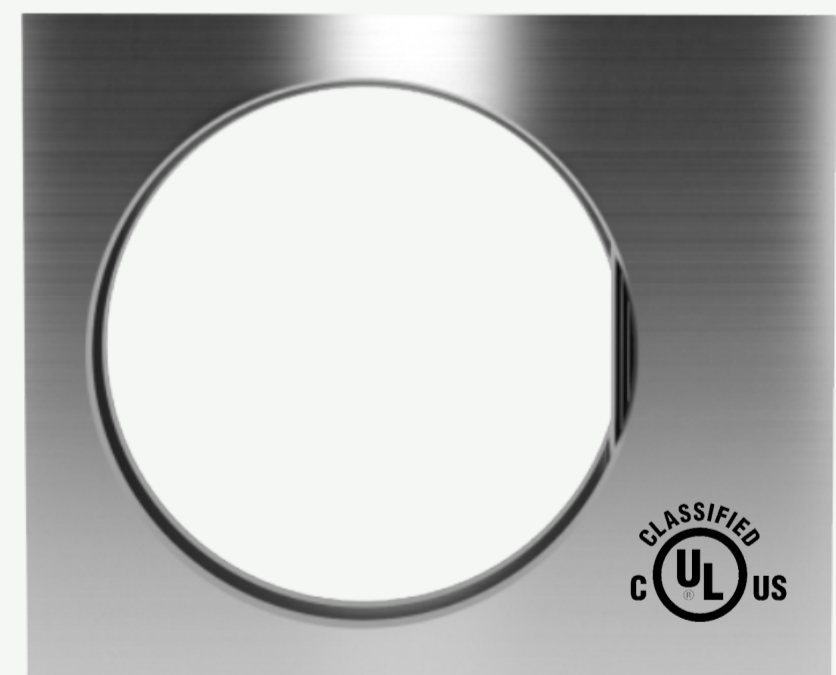
**Civil Defense
Authority Approved
Fire Rated Doors**

***Electric Strike Lock:**

Chute Doors are supplied with a 24V electric strike with a micro-switch to indicate a door status change (open or closed). This feature enables monitoring the status of doors on different floors. This feature enables locking of the all hopper doors at floors automatically for enhanced user and operator safety.

Fire Dampers

The discharge is a UL labeled 1 ½ Hr Fire Rated Accordion Damper held open by a 72°C fusible link and equipped with tension coils on either side of the damper to permit closing in case the link breaks.



An inclined Guillotine Type Shutter Door held open by a U.L. listed fusible link. The fire door will roll shut if the link is melted. The 4mm safety plate can also be used as a safety plate for protection from falling objects during the replacement of the trolleys.

AUTOMATIC CLEANING FEATURES

We equipped the internal waste handling process with convenient automatic cleaning systems to maintain the chute in a good condition. Besides the automatic cleaning cycle, an extra pendant control is provided to lift/lower the brush unit manually.

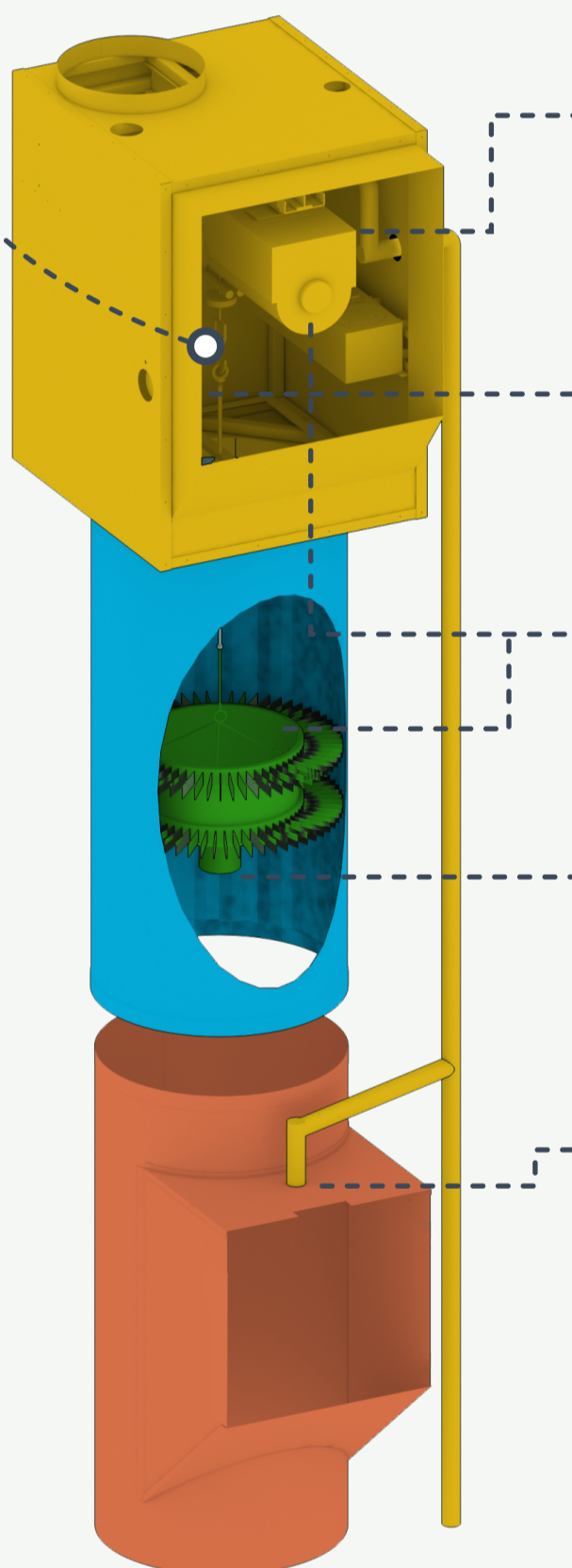


A Emergency Stop Button

Standard on all models, twist and release operation to shut off power in the event of an emergency.

B Durable Push Buttons

Low voltage push buttons with a positive action and strain relief wire, moulded into the pendant cable for added support and durability.



This system is also equipped with a sanitizing liquid tank and dosage pump which injects degreaser and a disinfectant solution into the water flow that is sprayed inside the chute. Easily by an electric solenoid valve.

An extra Pendant control lifts/lowers the brush unit manually for maintenance.

The brush has a rubber cylindrical housing with embedded stiff nylon brushes which are lowered and raised by a geared electric motor.

The nylon brushes scrape and clean the internal surface as they move up and down in the chute.

The flushing spray head at the top of the chute and the floors disburse a cleaning solution down the inside of the chute to control odours and bacteria.

The safety interlocking check mechanism ensures no doors can be opened unless the cleaning cycle is completed and the brush is in its designated place at the top.

BLAST PROOF VENT CAP

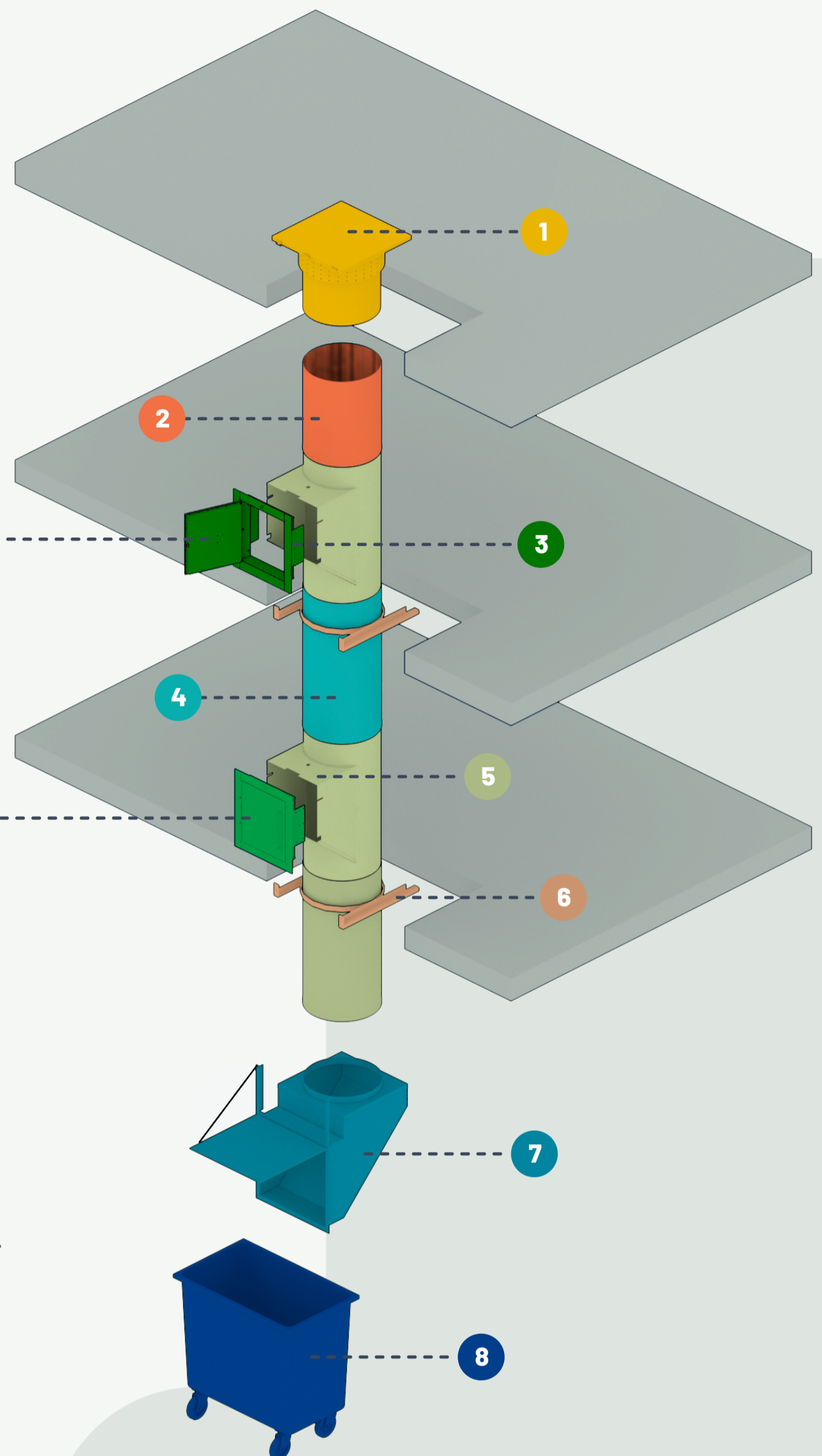
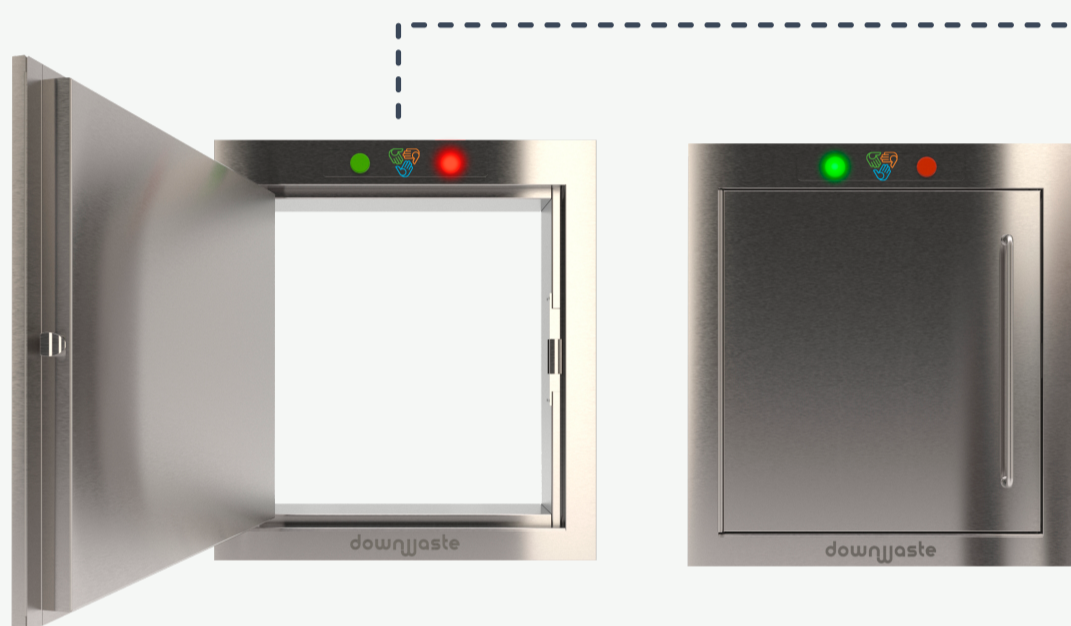


Blast Proof Cap extends above the roof by a minimum 1200mm with an NFPA compliant blast cap. Ventilation of the chute is required to extract the foul air to the atmosphere through the opening of the chute system.

The full diameter vent comes complete with roof flashing, riser and metal safety cap.

Laundry Chutes

Luxury hotels and even private villas choose laundry chutes over service elevators when it comes to the handling of bulky laundry from individual floors. We offer a variety of steel chute solutions which are quick and easy to install.



Enhanced Sound Properties



A quiet system for convenience in your building or hotel. The chutes are fixed to floors with hot dip galvanized brackets equipped with anti-vibration rubber pads. All outer surfaces of the chute are coated with a sound dampening material.

More Safety



Our doors and dampers are 90mins UL Fire Rated and the standard systems are equipped with automatic electric strike locks for safety of the residents and building operators.

More productivity

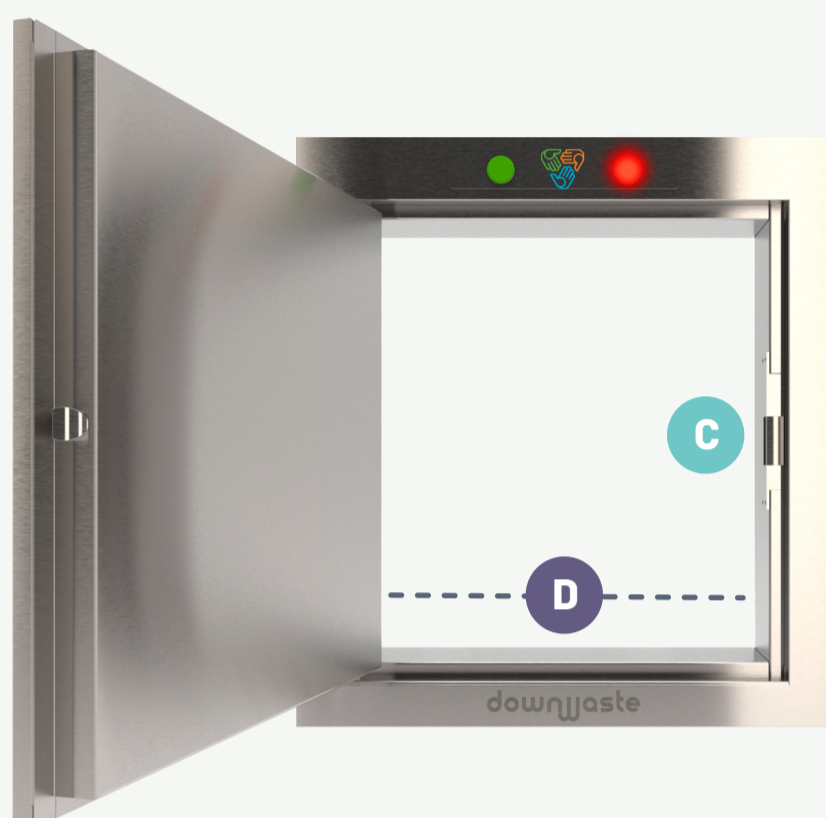


No more hassle of bringing the laundry downstairs.

- 1 Blast Proof Vent Cap
- 2 Chute Trunk
- 3 Laundry Door
- 4 Soundproof paint applied to all surfaces.
- 5 Fire Sprinkler
- 6 Support bracket with anti-vibration rubber pad
- 7 Laundry Discharge
- 8 Laundry Trolley

Door Specifications

- ✓ Designed to be ergonomic and easy to operate.
- ✓ Stainless Steel handle and 304 or 316 4B Finish Leaf and Frame.
- ✓ Self-closes slowly and silently.
- ✓ Electrically interlocking 24V.
- ✓ Complies with the NFPA requirements and UL 10B fire rated for 90 minutes.

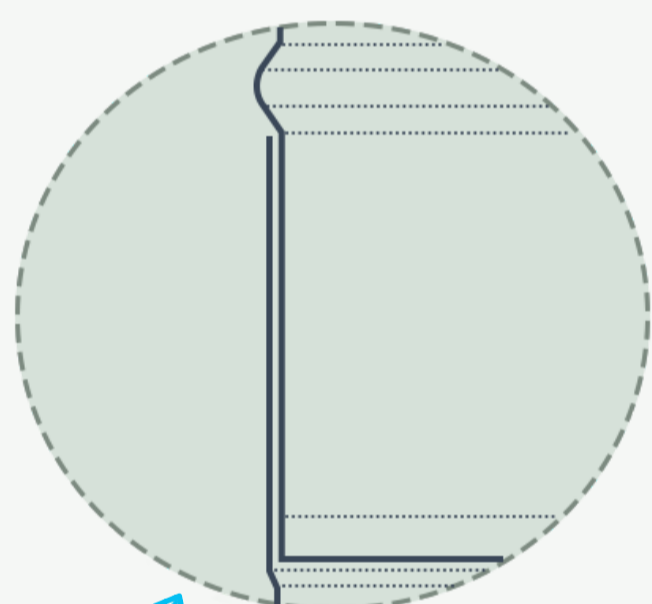


- A** Hand Operated with Smooth Self Closing Gas Springs
- B** Optional Stainless Steel Keyed L Handle
- C** 24V Electric Strike Lock
- D** Size (mm):

12"x12" (300x300 mm)

15"x15" (395x395 mm)

18"x18" (450x450 mm)



In addition to the seamless, continuous automatic welding in the chutes, we connect pipes by inserting the male ends into the female ends from top to bottom, ensuring no projections are inside where laundry may get caught or damaged.

Chute Diameters(mm):

300

450

600



Fire Sprinklers

1/2" Glass Bulb Fire Sprinklers with connector thread, standard response pendant type with actuating temperature 72° C and complies with NFPA 13. The sprinklers must be located at alternative floors and at the top of the chute as per NFPA Code 82.



Laundry discharge

You can place clothes down the chute as they will land safely in your basket. This convenient mechanism is equipped with a required fire rated top hinged stainless steel discharge door that is held open with an U.L. approved Fusible link set at 72° C.

Electric Control Panel

The Electric Control Panel consists of electrical security switches that allow the easy and instant locking of all intake doors at floors with 24V supply. This handy and safe control panel is also used for activating the functions such as cleaning system and exhaust fan if.

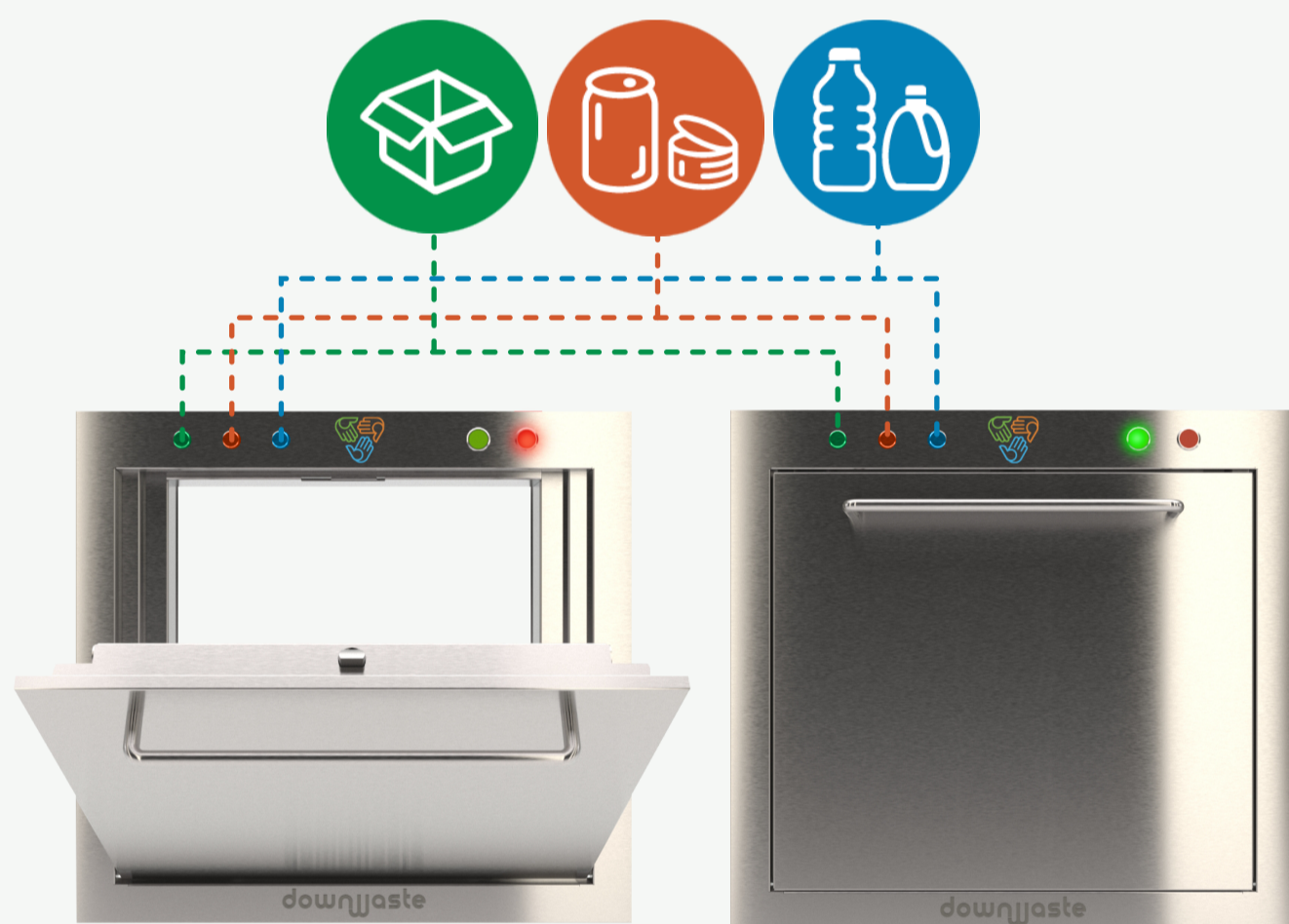


Recycling Chutes

Recycling chutes are designed to enable separate disposal of waste in areas of waste generation.

This simple and effective system not only saves space, and reduces handling costs but also transforms waste into a valuable waste product, a new asset for your building. This is key to a sustainable waste management system and basic to a green building. With the TriSorter, your building will have the high quality of sorted metals, cardboard and plastic packaging from a single recycling chute with a press button selection panel available on each floor.

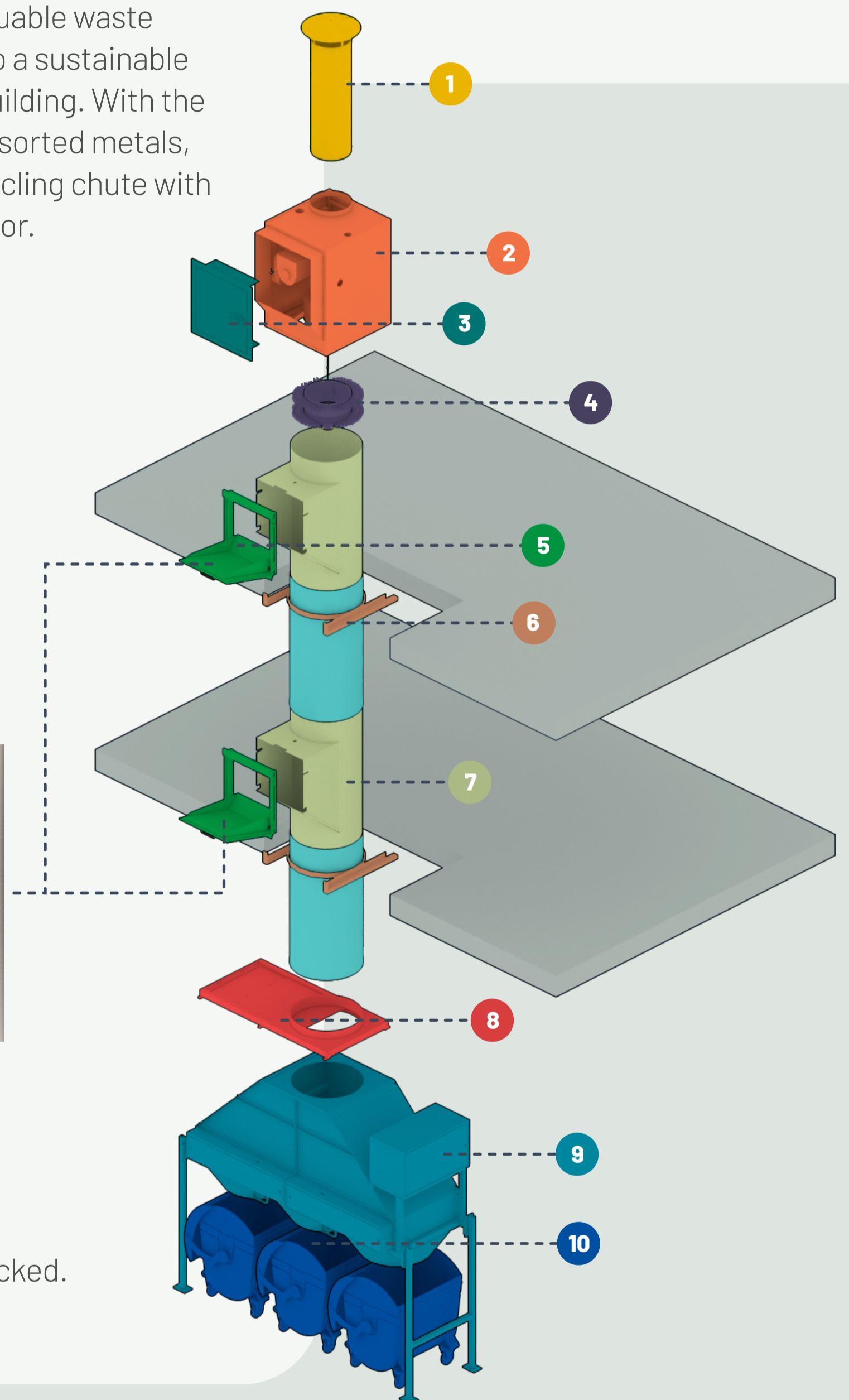
- Cost-saving, eco-friendly amenity and a selling feature of the building.
- Proper handling of recyclables will generate a new income for your building.



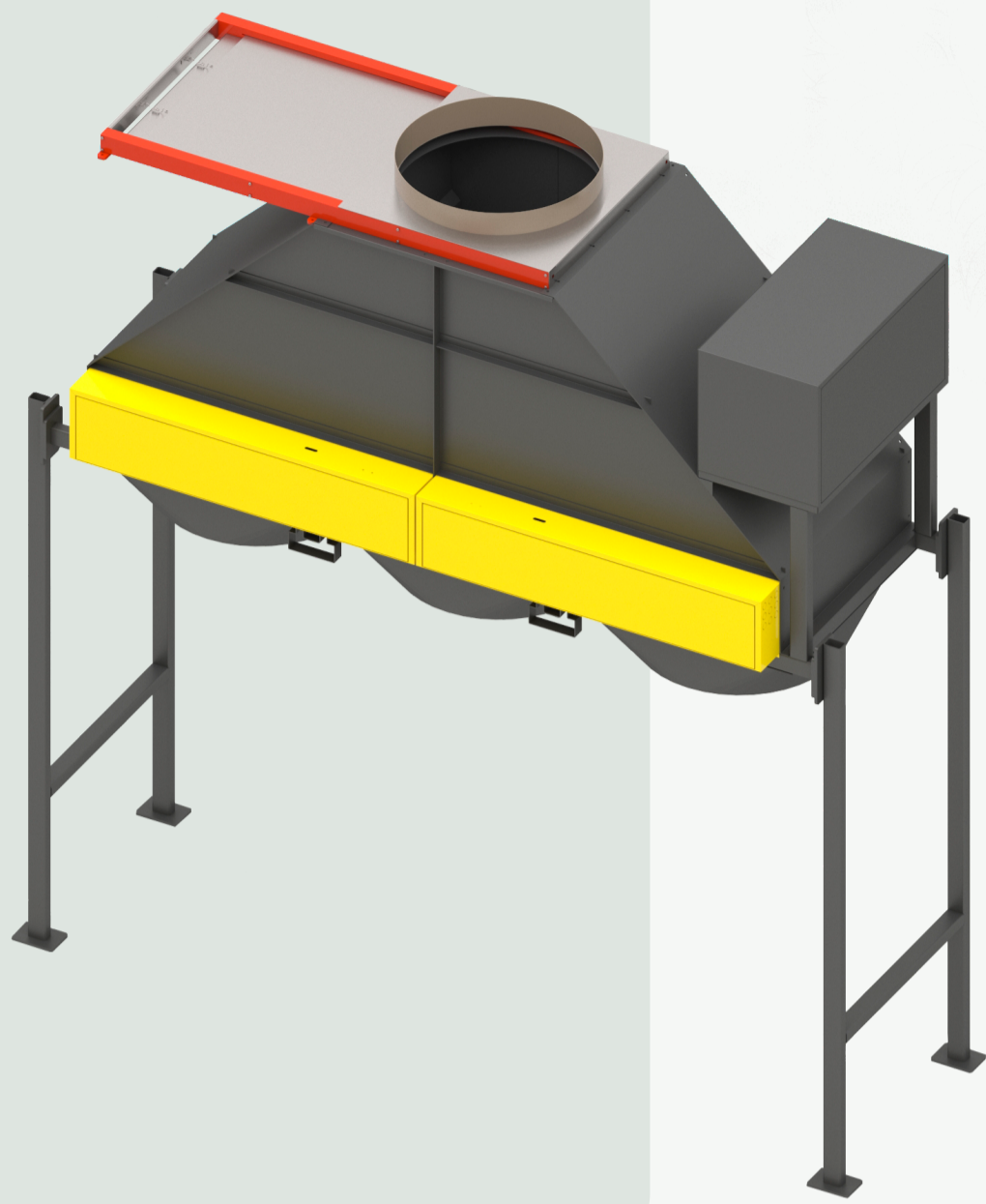
Easy to use

1. Select the waste type from the press buttons.
2. Wait for the green light for a few seconds.
3. Open the door and dispose once the door is unlocked.

By pressing the button on each hopper door, the separator will adjust to direct the deposited bag into its respective container.



- | | |
|---------------------------------|----------------------------------|
| 1 Weather Proof Vent Cap | 6 Support Frames |
| 2 Cleaning System | 7 Chute Intake |
| 3 Access Door | 8 Fire Damper |
| 4 Brushing Unit | 9 Tri-Sorter |
| 5 Hopper Doors | 10 Volume Control Sensors |

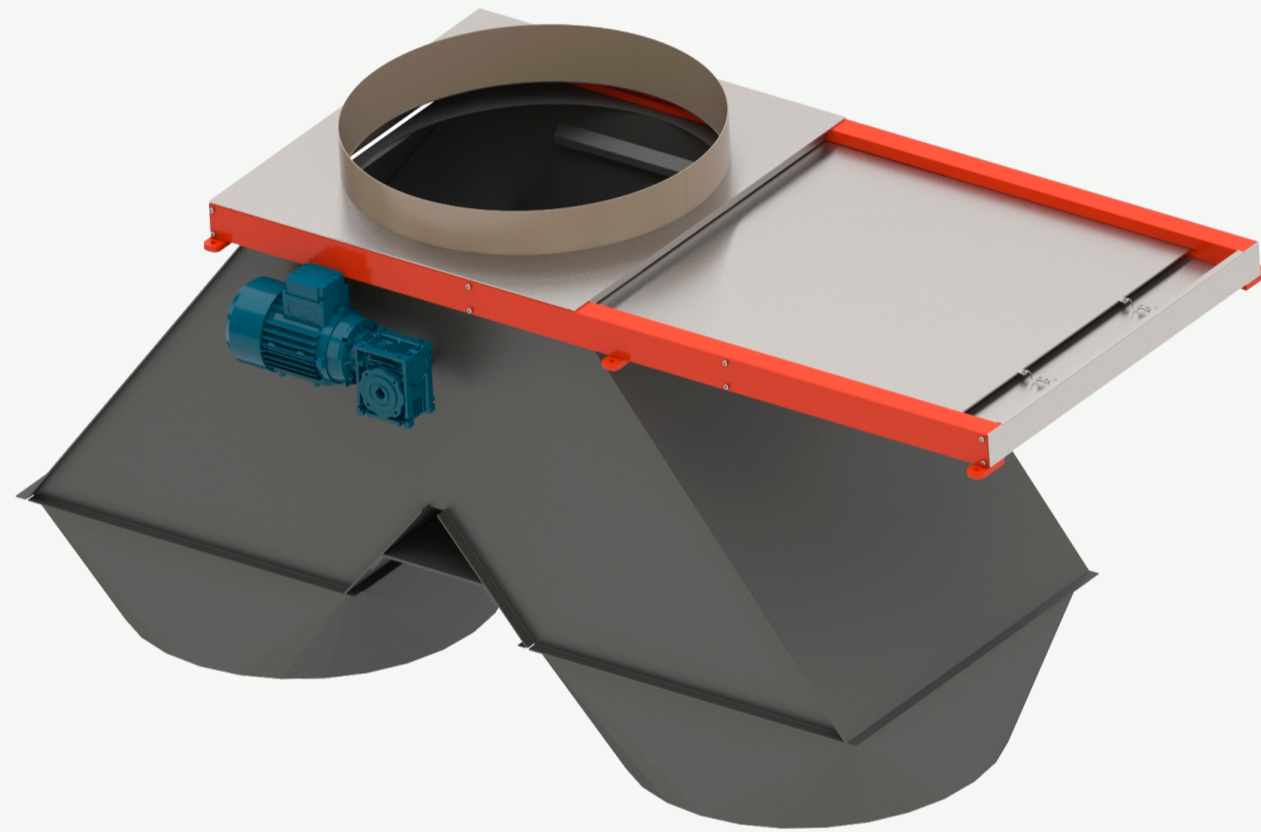


The household waste is composed of large amounts of recyclable paper, cardboard, plastic and metal containers.

Sorting of valuable recyclables such as "Metal Containers", "Plastic Containers" and "Paper & Cardboard".

The proximity sensors positioned above the trolleys are interconnected with the hopper doors and when one of the trolleys is full, the doors are locked automatically.

In order to sort easily the "Dry Recyclables" from "Wet Waste" in your building, a bi-sorter will be the convenient solution.



The chute vent consists of a reduced diameter stainless steel vent, rainproof umbrella cap, a mounted venting fan, bird screen and draft control mesh.

AUTOMATIC CONTROLS, WASTE GENERATION, AND WASTE MONITORING

The main electrical Control Panels have been designed for easy and instant control of the chute features. The control panels consist of electrical security switches and controls for activating the functions such as locking/unlocking the doors, activating cleaning and disinfection systems and the exhaust fan. The control panel visually shows the operators the status of doors on all floors as well as all chute functions.

Safety:

The system is equipped with sophisticated heat and smoke detectors, overload sensors and maintenance safety sensors.

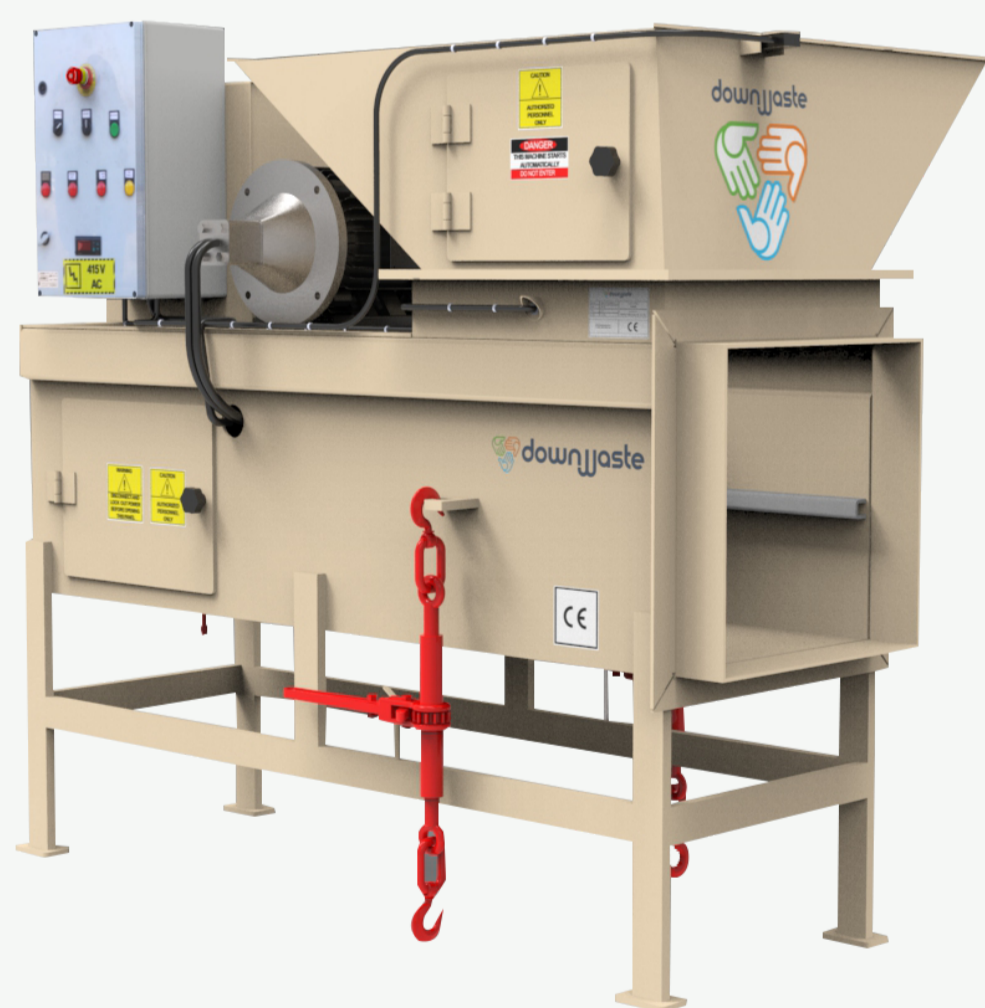
Chute Fed Compactor

Compactors are leakproof and designed to compress household waste to reduce the volume of storage space it requires. In turn, fewer operators and trolleys are required to handle bulky waste, saving time and reducing costs.

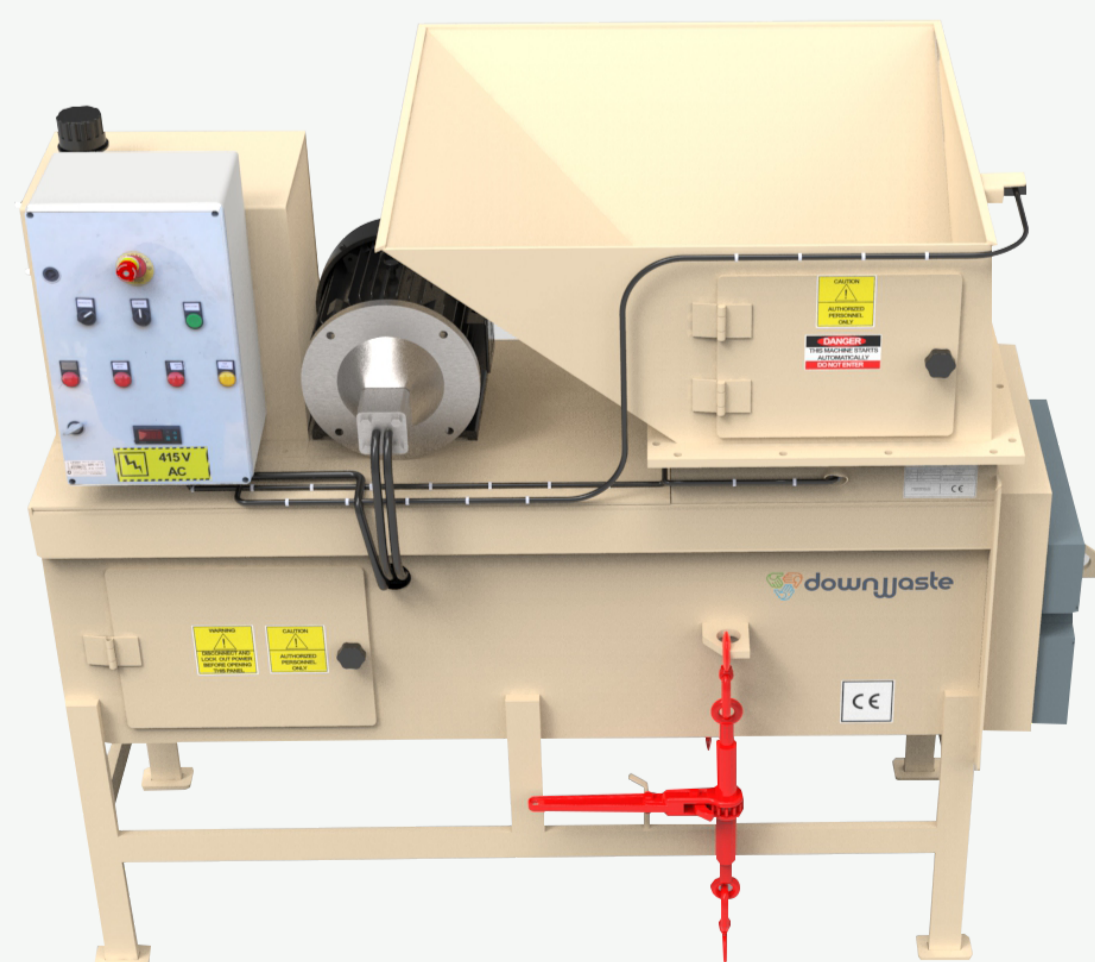
Fully-automatic, electric-eye-controlled, hydraulically-operated, stationary compactor compacts garbage into a fitted container where it is squeezed of its original volume.

The compaction cycle is automatically started when the charge box is filled with waste and automatically stop when the receptive trolley is full.

- ✓ Reduces the household waste to one third of its original volume.
- ✓ CE Certified
- ✓ Suitable for all types of chutes up to 800mm diameter.
- ✓ Furnished with motor starter and 380V/415V control and programmable controller
- ✓ For "dry & waste" fully liquid proof and easy to clean



The control panel is mounted to the remote power pack and includes a key activated on-off switch, start button, manual forward reverse switch, emergency stop/reset button.



The compactor is controlled and monitored by a microprocessor, which visually allows the user to read the various operations of the compactor. Indicator lights on the board includes photo eye fault, high temperature, low oil and Trolley full fault.

Refuse Press Compactor

Downwaste deploys heavy duty waste press compactors to residential and industrial mega buildings to minimize the required handling space for the waste by reducing waste fractions to 1/6 of the original volume. These mobile units not only reduce transportation and disposal costs but also they are safe and convenient.

Refuse Press Compactor is the optimum solution for handling of large amounts of waste as it is easily and safely compacted in a sealed container, reducing the waste room space and number of trolleys required to store.



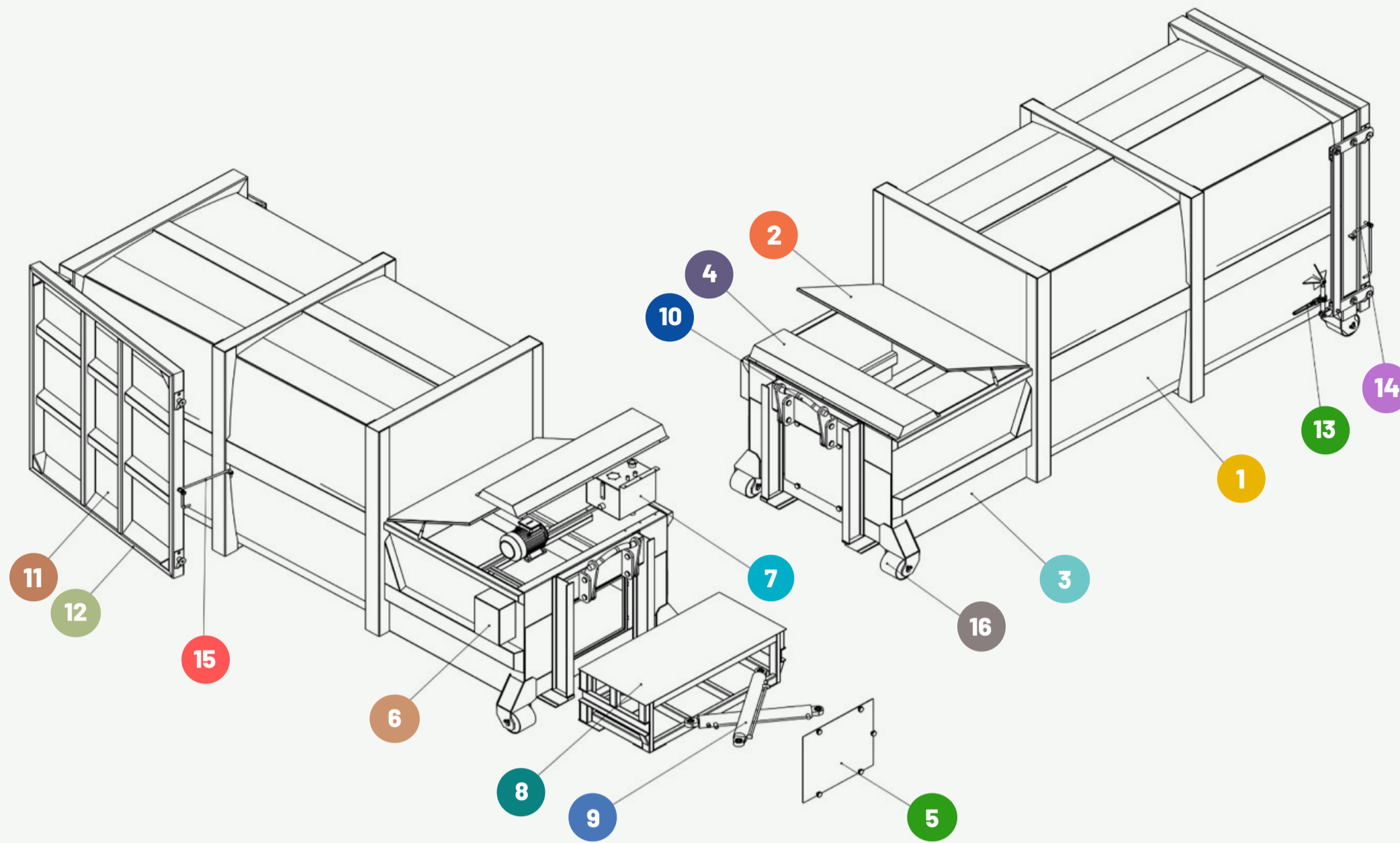
Options

- + Customer specific bins and capacity to order.
- + Hydraulic opening of discharge door.
- + 12, 16, 18 or 20 m³ container sizes.
- + Integrated bin lifter.
- + Suitable for stand-alone and ramp.
- + Integrated hook in the front and back.
- + Wide range of colour options.

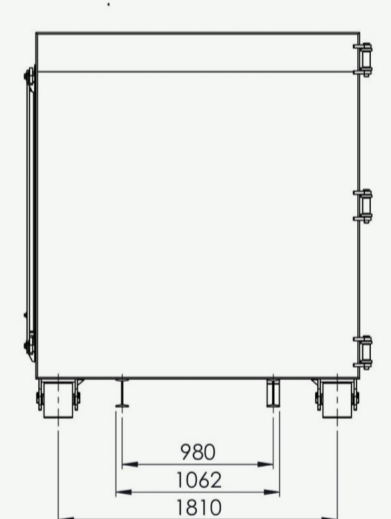
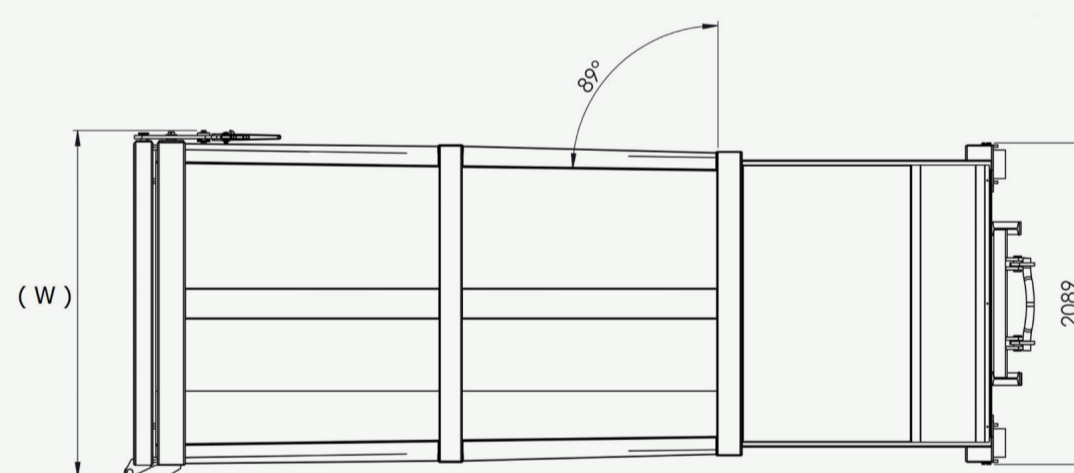
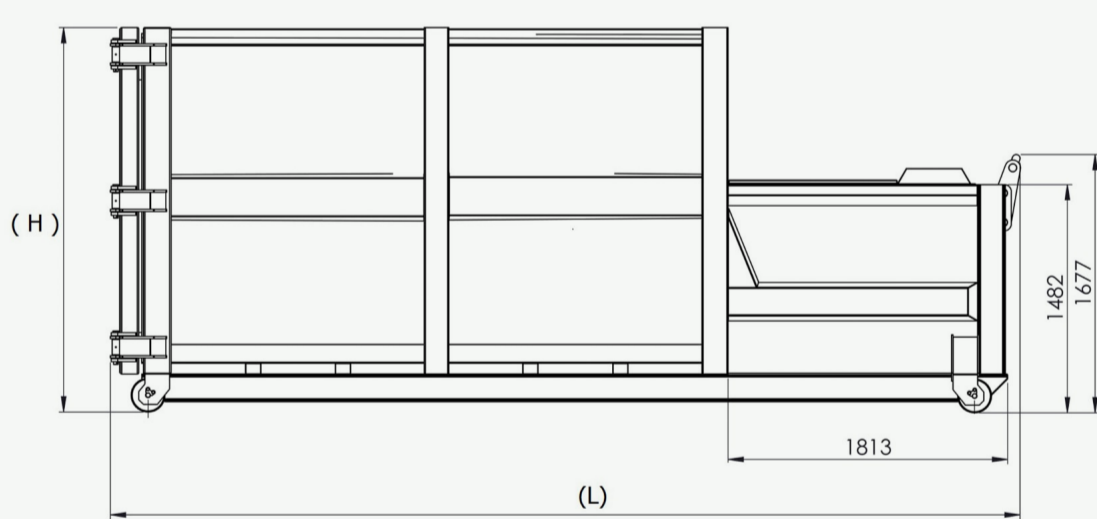


Standard Features

- ✓ 100% Full indicator light.
- ✓ 80% Full indicator light.
- ✓ Large feed opening.
- ✓ Lifting unit at front or side.
- ✓ Automatic, hydraulically controlled lifting and lid opening.
- ✓ 380 kN press force.
- ✓ 24V safe and reliable digital control.
- ✓ Conical container for easy discharge.
- ✓ Sensors to automatically start the compacting process when the charge box is full.



- 1** Container Body
- 2** Loading Lid
- 3** Charge Box
- 4** Service Door
- 5** Leakproof Maintenance Door
- 6** Control Panel
- 7** Hydraulic Oil Tank
- 8** Compression Plate
- 9** Hydraulic Charge Pistons
- 10** Lift Up Hook
- 11** Discharge Door
- 12** Door Sealant
- 13** Discharge Door Locking Mechanism
- 14** Discharge Door Safety
- 15** Discharge Door Emptying Lock
- 16** Heavy Duty Wheels



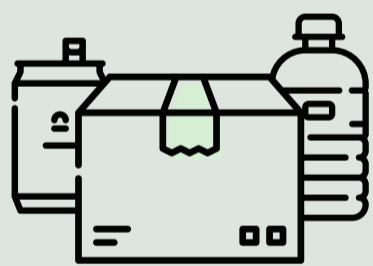
Technical data	DWPC-12	DWPC-16	DWPC-18	DWPC-20
Net capacity	12 m ³	16 m ³	18 m ³	20 m ³
(L) Machine length	5050 mm	5425 mm	5640 mm	5900 mm
(W) Machine width	2254 mm	2254 mm	2254 mm	2254 mm
(H) Machine height	2497 mm	2497 mm	2497 mm	2497 mm
Feed-opening length	1057 mm	1057 mm	1057 mm	1057 mm
Feed-opening width	1714 mm	1714 mm	1714 mm	1714 mm
Feeding Hopper Capacity	1,3 m ³	1,3 m ³	1,3 m ³	1,3 m ³
Compaction force	4:1	4:1	4:1	4:1
Hydraulic oil tank	28 liter	28 liter	28 liter	28 liter
Electric Motor	5,5 kW	5,5 kW	5,5 kW	5,5 kW
Power supply	3 x 400 V, PE/50 Hz	3 x 400 V, PE/50 Hz	3 x 400 V, PE/50 Hz	3 x 400 V, PE/50 Hz

Balers

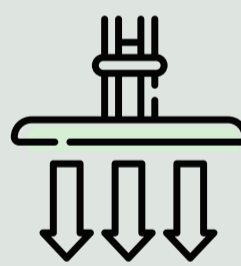
Instead of 'waste' we need you to see a tangible asset, a commodity with a market value. When your recyclables are baled and stored properly, this will not only save space and time, but it will also turn your waste into a source of income!

Compaction and baling of recyclables is an important step in sustainable waste management. Our powerful baling solutions contribute to efficient and effective waste management in your building. Automatic balers are a safe and convenient tool in meeting your material handling challenges. Our baling solutions are designed in various sizes and capacities to fit your needs.

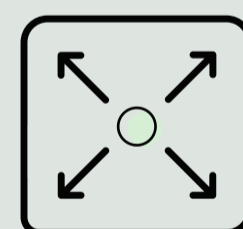
**Ensures operator safety - complies with the EN 16500:2014 safety standard.*



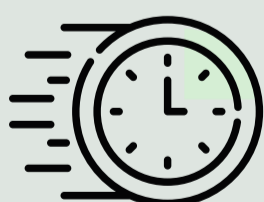
Cardboard, plastic foil, paper, PET bottles, aluminum and tin cans, plastics



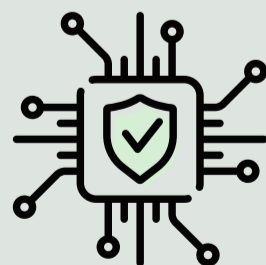
The superior press force combined with a long stroke to achieve maximum bale weight



Large and wide feeding inlet



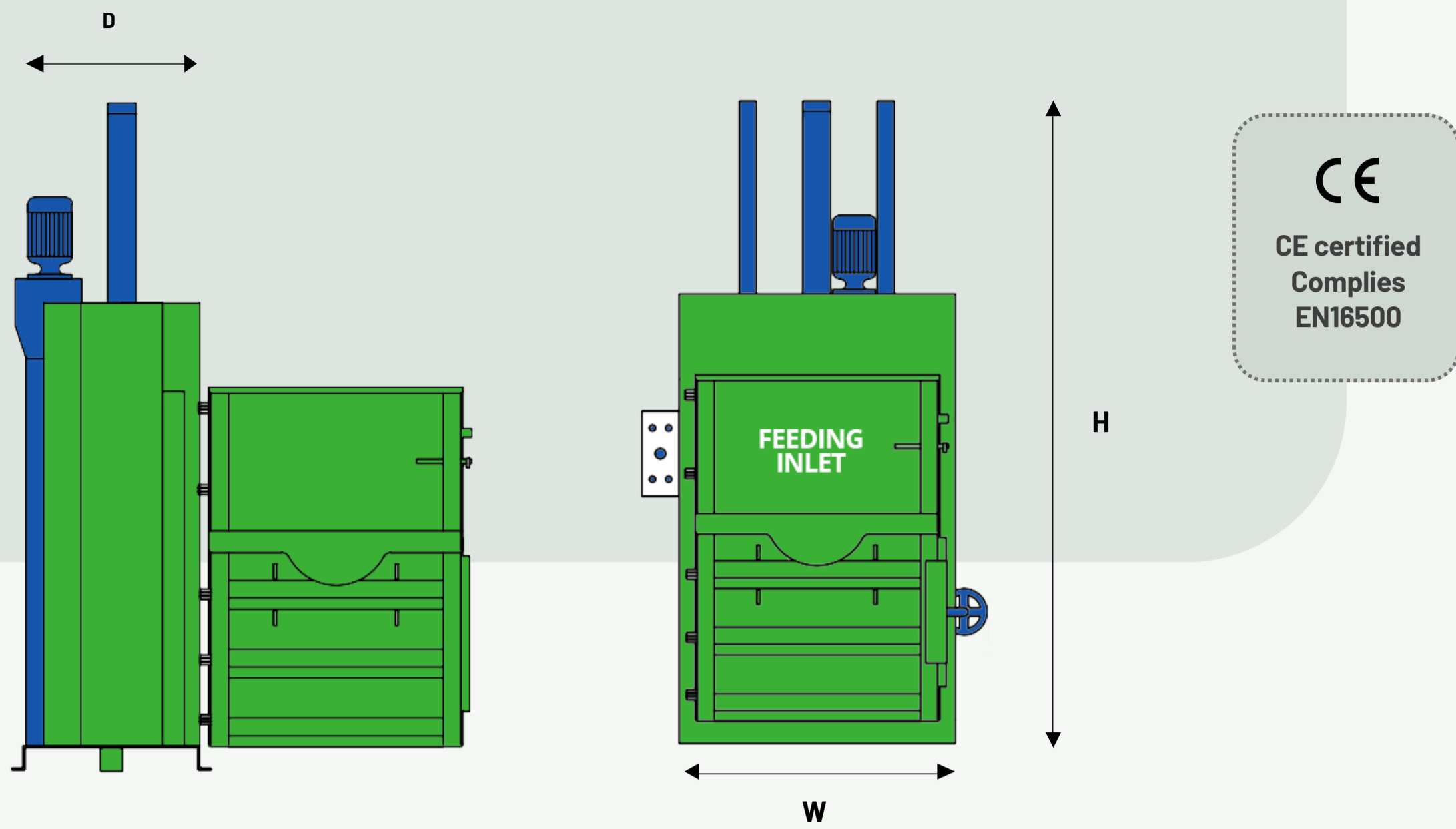
Quick, less time spent on waste handling



Intelligent safety features



International warranty



Item Number	DP5	DP10	DP20	DP25	DP30	DP50
Cycle Time	45 sn	45 sn	45 sn	45 sn	45 sn	45 sn
Width	900mm	900mm	1300mm	1500mm	1500mm	1500mm
Depth	700mm	700mm	900mm	1000mm	1000mm	1000mm
Height	2250mm	2250mm	2600mm	2700mm	2700mm	2800mm
Feeding Inlet	500x700mm	500x700mm	1100x700mm	1200x700mm	1200x700mm	1200x700mm
Sound Properties	<40 dB	<40 dB	<60dB	<60dB	<60dB	<60dB
Bale Size	(W)700 x (D)500 x (H)800mm	(W)700 x (D)500 x (H)800mm	(W)1100 x (D)700 x (H)850mm	(W)1200 x (D)800 x (H)850mm	(W)1200 x (D)800 x (H)850mm	(W)1200 x (D)700 x (H)900mm
Electric Motor (kW, A)	2 Kw	2 Kw	5.5 kw	5.5 kw	5.5 kw	7.5 kw
Power (V/Hz)	3x400V/50Hz	3x400V/50Hz	3x400V/50Hz	3x400V/50Hz	3x400V/50Hz	3x400V/50Hz
Max Compaction	5 tons	10 tons	20 tons	25 tons	30 tons	50 tons
Bale Weight	60-80 kg	100-120 kg	200-270 kg	250-290 kg	250-290 kg	450-550 kg
Gross Weight	500 kg	500 kg	1400 kg	1800 kg	1800 kg	2500 kg
Number of Straps	2 Straps	2 Straps	4 Straps	4 Straps	4 Straps	6 Straps
Cycle	Automatic	Automatic	Automatic	Automatic	Automatic	Automatic
Bale Ejection	Mechanical by Belt	Mechanical by Belt	Mechanical by Belt	Mechanical by Belt	Mechanical by Belt	Mechanical by Belt

HDPE Trolleys & Bins

Durable and lightweight High Density Polyethylene waste containers ease the handling of waste as produced by compact injection moulding process. HDPE is also easy to clean thanks to the smooth surfaces inside and outside.

A lightweight alternative to Hot Dip Galvanized metal trolleys, HDPE bins can be very convenient to handle many types of waste and recyclables. The robust stacking ribs allow for safe transport of the waste.

HDPE Bins are also excellent for temporary storage of waste types that shouldn't be disposed of in the waste chute such as gas electronic waste.

Available Sizes:



Material

Superior HDPE strength and high resistance UV, cold, heat and chemicals.

Solid Lid

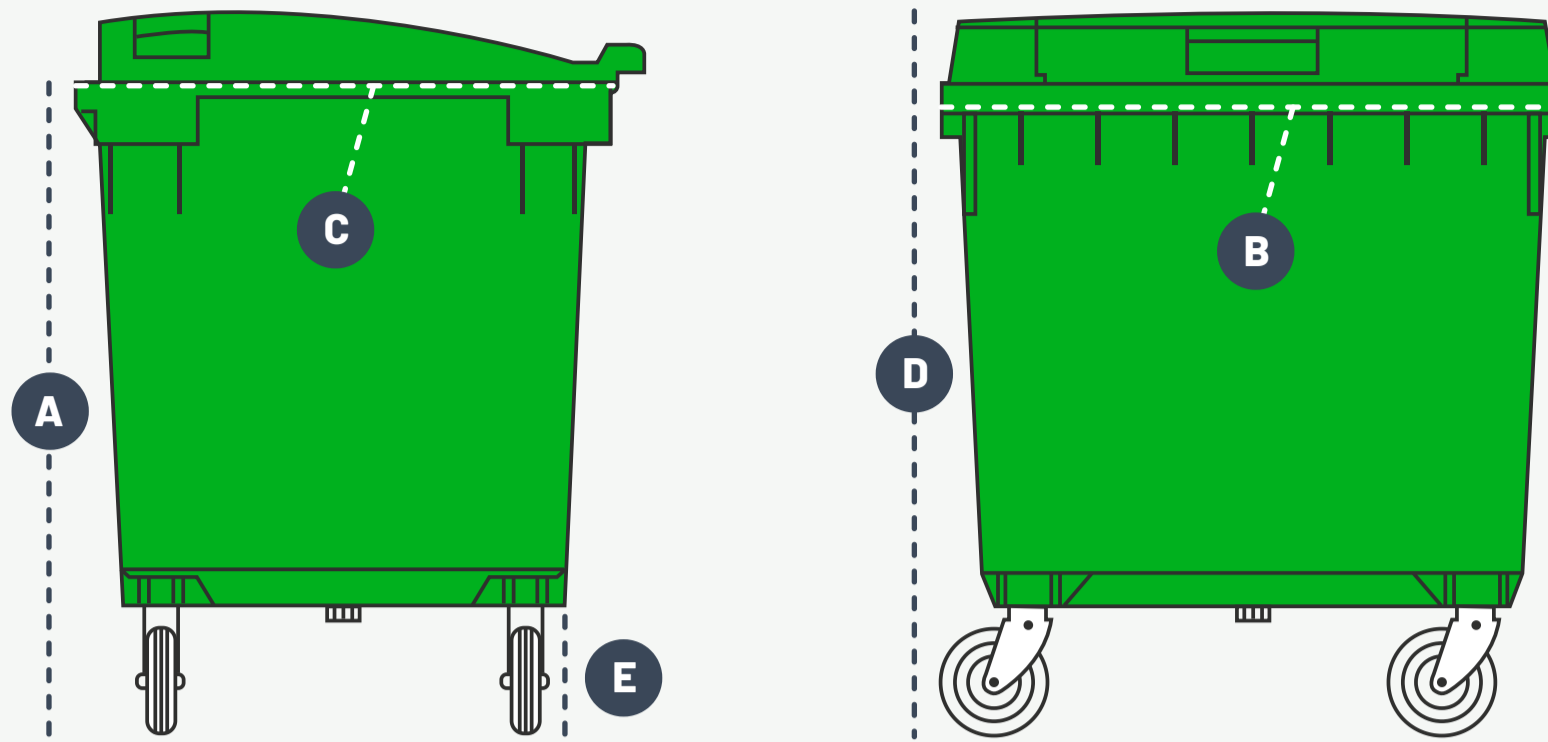
A solid lid with a rubber ring to provide excellent sealant features that prevents odour and insects.

Handling

Convenient handles and stack for mobility, smooth-running, solid rubber tyres on Ø 200 mm heavy duty castors with two locking tyres on the front.

Optional Pedal

A convenient foot pedal for easy and hygienic operation of the bins.

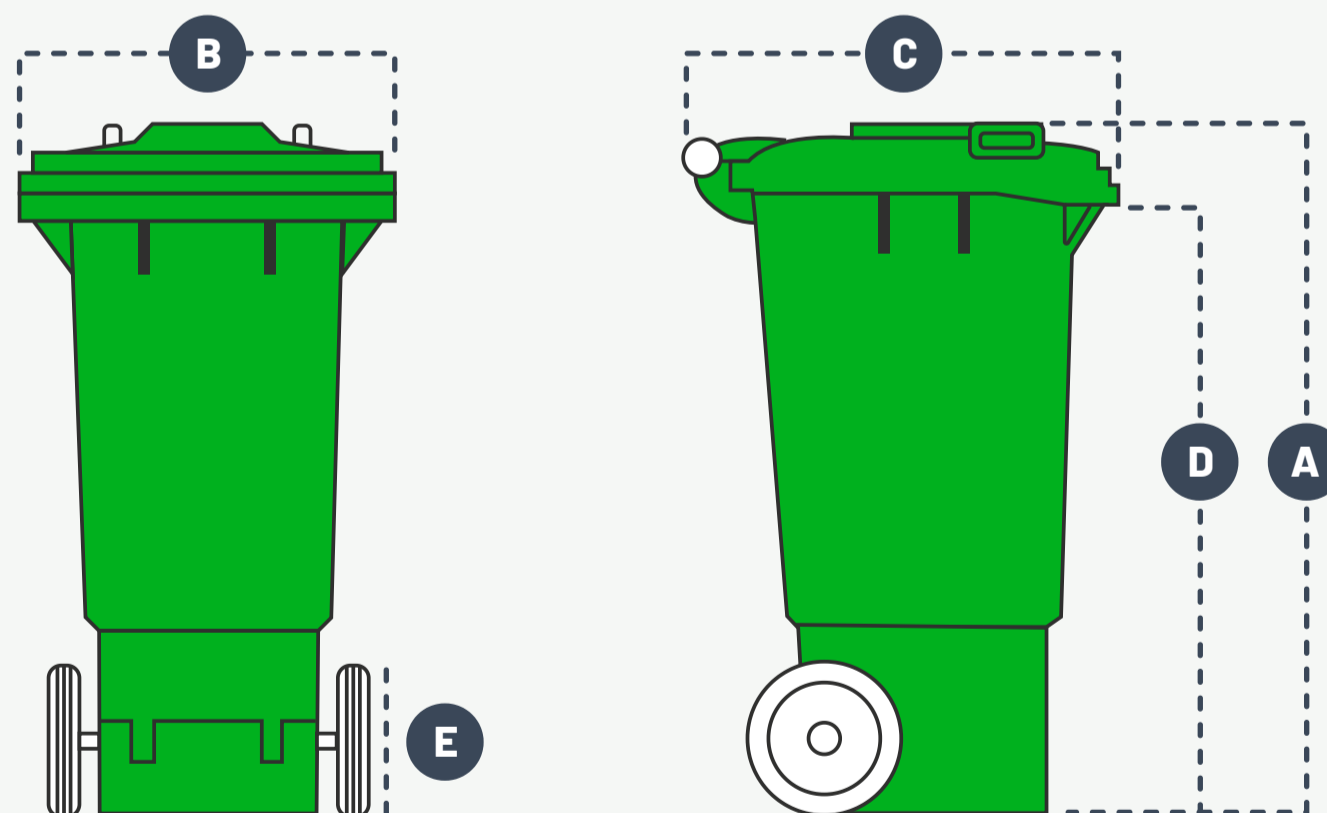


Size	(lt)	660
Weight	(kg)	43
Max Load	(kg)	310
A. Open Height	(mm)	1190
B. Width	(mm)	1360
C. Depth	(mm)	780
D. Closed Height	(mm)	1085
E. Tyre Diameter	(mm)	200

Size	(lt)	770
Weight	(kg)	46
Max Load	(kg)	400
A. Open Height	(mm)	1180
B. Width	(mm)	1263
C. Depth	(mm)	785
D. Closed Height	(mm)	1275
E. Tyre Diameter	(mm)	200

Size	(lt)	1100
Weight	(kg)	50,6
Max Load	(kg)	440
A. Open Height	(mm)	1180
B. Width	(mm)	1280
C. Depth	(mm)	1305
D. Closed Height	(mm)	1290
E. Tyre Diameter	(mm)	200

- ✓ Manufactured according to DIN 30700 / EN 840
- ✓ Resistant to UV, cold, heat and chemicals,
- ✓ Well-placed handles for convenient handling
- ✓ Smooth-running, solid rubber tyres on Ø 200 mm heavy duty castors
- ✓ Embossing, hot stamping and screen printing
- ✓ Manufactured from recyclable materials
- ✓ Available in 10 different colours
- ✓ All metal parts have been galvanised and therefore protected against corrosion.



Size	(lt)	80
Weight	(kg)	9,3
Max Load	(kg)	32
A. Closed Height	(mm)	770
B. Width	(mm)	480
C. Depth	(mm)	540
D. Open Height	(mm)	615
E. Tyre Diameter	(mm)	200

Size	(lt)	120
Weight	(kg)	8,8
Foot Pedal	(kg)	1,4
Max Load	(kg)	48
A. Closed Height	(mm)	940
B. Width	(mm)	480
C. Depth	(mm)	540
D. Open Height	(mm)	870
E. Tyre Diameter	(mm)	200

Size	(lt)	240
Weight	(kg)	15
Max Load	(kg)	96
A. Closed Height	(mm)	1110
B. Width	(mm)	550
C. Depth	(mm)	740
D. Open Height	(mm)	1000
E. Tyre Diameter	(mm)	200

Size	(lt)	360
Weight	(kg)	25
Max Load	(kg)	160
A. Open Height	(mm)	1100
B. Width	(mm)	620
C. Depth	(mm)	860
D. Closed Height	(mm)	1000
E. Tyre Diameter	(mm)	200

Heavy Duty Waste Trolleys

Municipality type Heavy Duty Hot Dip Galvanized waste trolleys convenient for open air shopping centres, industrial zones, petrol stations, recreation areas, sports areas long lasting under extreme weather conditions.



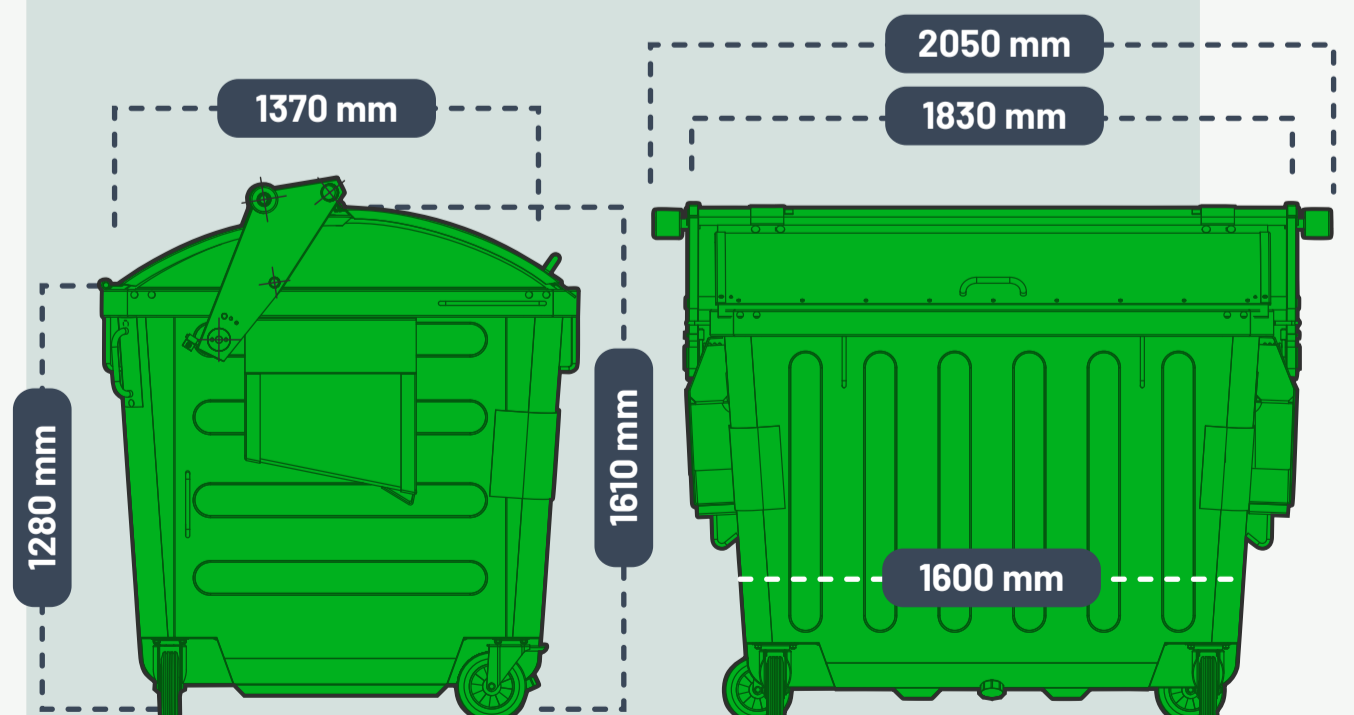
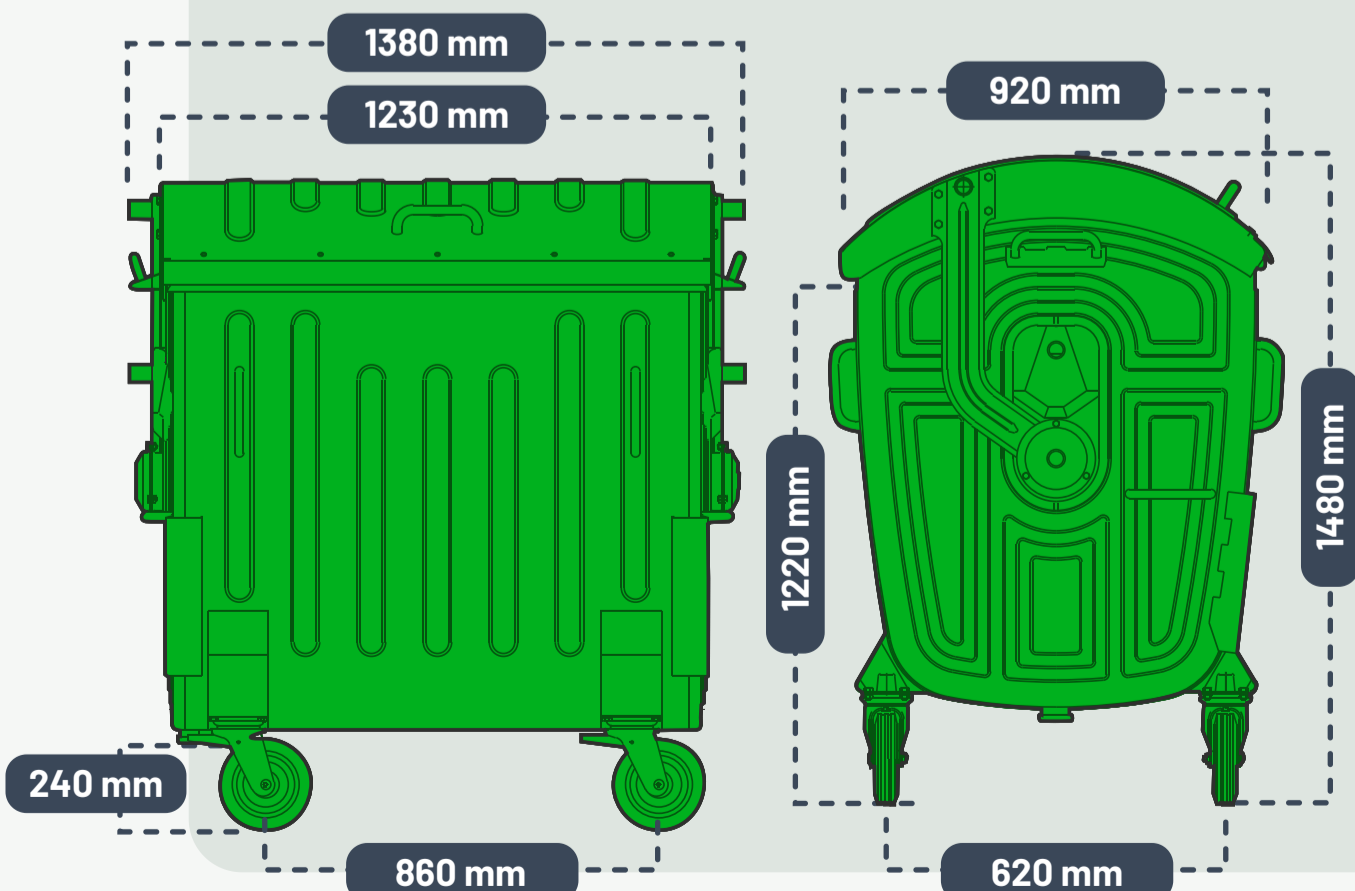
Nominal volume: 1100 lt

- ✓ Carrying capacity per wheel 400 Kgs
- ✓ All metal parts have been galvanized (DIN 30700) and are therefore protected against corrosion.
- ✓ Heavy-Duty GI material
- ✓ Special tension spring for easy opening - Remains in 2 positions with an automatic locking device.
- ✓ Moulded rubber for hand protection
- ✓ Frontally operated centrally locking
- ✓ 4 swivel wheels with 2 front brakes
- ✓ Solid rubber tires
- ✓ Lateral locking on two front wheels
- ✓ Net Weight: 130 Kgs
- ✓ Max Load: 880 Kgs
- ✓ DIN EN 840-3



Nominal volume: 2500 lt

- ✓ Hot dip galvanized body
- ✓ Trolleys have easy to operate hinged lids and are fitted with heavy duty castor wheels.
- ✓ Strengthening ribs at body, bottom reinforced with stable wheel cases.
- ✓ Galvanized sliding lid
- ✓ Lateral and rear sliding lid
- ✓ Net Weight: 310 Kgs
- ✓ Max Load: 1500 Kgs



Prolitec Odor Solutions

HOW DOES IT ELIMINATE MALODORS?

Prolitec scents contain their ground-breaking Malodor Control DeodEclyx® technology to:

- ✓ Protect the fragrance experience against malodors
- ✓ Preserve the fragrance performance
- ✓ Enhance the fragrance experience
- ✓ Provide long-lasting freshness



● Malodor

● DeodEclyx®R & DeodEclyx®RPat

● Genie Fragrance

DeodEclyx®R and **DeodEclyx®RPat** molecules neutralize malodor molecules and **DeodAcil™** inhibits growth of odor causing bacteria, together leaving the pleasant Genie fragrance experience for the residents.

DeodEclyx®R and **DeodEclyx®RPat** molecules: Neutralizes malodor molecules.

DeodAcil™ molecules: Inhibits growth of odor causing bacteria.

End Result: Together leaving the pleasant fragrance experience for the residents.

HOW DOES IT INHIBIT BACTERIA?

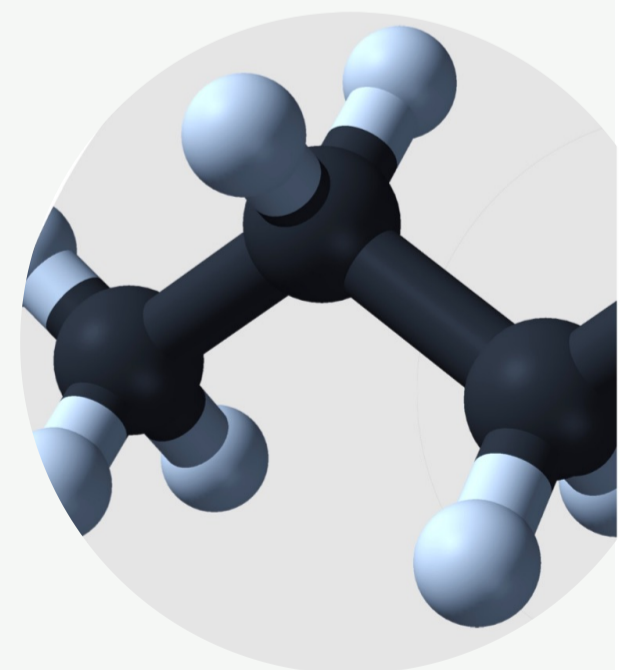
Analytical data provides evidence that the MO components reacted in the air when in the presence of the technology.

EVALUATION RESULTS

In the presence of the **DeodEclyx®** Accord, the **Butylamine** molecule is reduced by 92%

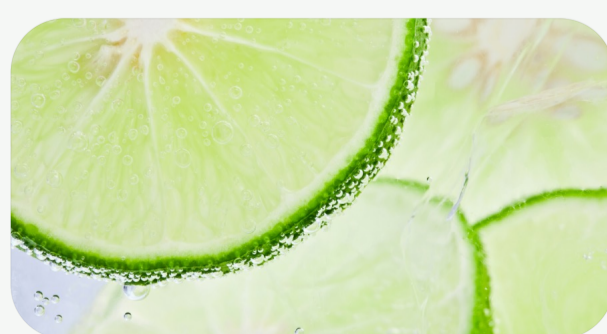
Butylamine is a key component of Trash Malodors, having a fishy, ammonia smell.

DeodEclyx accords against **Butylamine**, a key ammonia malodor in trash.



THE FRAGRANCES

Fresh Grapefruit, Sparkling Lime





The A0580 uses Prolitec's patented AirQ technology to diffuse fragrance and odor canceling products into the air. This appliance was designed for commercial use to treat spaces directly, with various mounting configurations available. The integrated fan helps disperse the fragrance.

A0580, the most versatile of Prolitec's appliances, is perfect for medium to large spaces and comes in white or black. The Trash Chute Adaptor can be used with the A0580 to diffuse fragrance directly into trash chutes.

One-touch, digital display is very easy to use.

Installations:

Table-top, track light mounted, HVAC installed, wall mounted, or through the wall.

Coverage:

Perfectly scents spaces up to 850 cubic meter.

Programming:

Up to 21 start/stop times plus 24/7 mode 50 intensity level options give you control.

3 off-cycle lengths for different air flows ScenXus compatible.



The airflow of users opening the chute doors on floors above draws the scent upwards, ensuring a pleasant aroma for those using the chute.

Prolitec's A01280 is designed to diffuse fragrance through air handler systems for beautiful even coverage of expansive areas.

Installations:

Best when HVAC installed. It can also be free-standing, or wall-mounted.

The "Environmental Stabilization Kit" installation even in extreme temperatures.

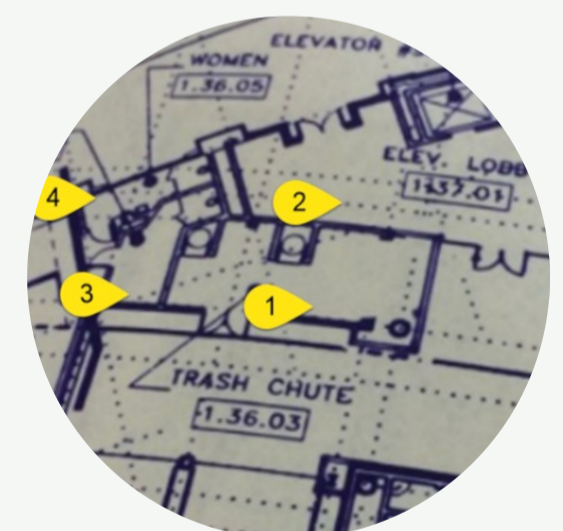
Coverage:

Up to 425 cubic meter.

Programming:

Up to 21 start/stop times plus 24/7 mode 50 intensity level options give you control.

3 off-cycle lengths for different air flows ScenXus compatible.



Four large diffusers are controlled from a single hub, reducing the need for electrical installations and covering up to 32 meters in any direction from the control unit.



Maintenance & Repair Services

Waste management is a complicated issue. Waste chutes, compactors and bins will provide perfect habitat for bacteria, germs and viruses. Failure to maintain properly will cause unpleasant odor and will make the occupants prone to such airborne bacteria and increase the risk of infectious diseases.

Due to the highly flammable methane gases produced in the waste room, fatal fire accidents may occur. In many countries, the periodic maintenance for fire safety is mandatory; however, it is vital that all fire rated assemblies such as hopper door self-latch, self-closing mechanisms and fire damper plate are inspected periodically and kept functional. Regardless of the height of your building, we have the appropriate equipment available to completely and professionally clean and repair your chute in a short time.

As a worldwide exporter and manufacturer of waste management equipment, we are able to repair or replace most of the existing chute parts.

		Basic Fire Safety	Fire Safety & Hygiene	High - End	Green Building
Periodic Maintenance	Weekly, Bi-Weekly or Monthly periodic cleaning and maintenance options.	One Time	One Time		
Fire Safety	Professional system inspection of all fire rated door, based on NFPA guidelines to ensure fire code safety compliance.				
Cleaning and Disinfection	Thorough cleaning of the chute, compactor, bins, door assemblies and waste rooms.				
Odor Control and Fragrance	Prolitec odor remediation and scent diffuser to control odours effectively and enhance the fragrance experience.				
Emergency Breakdown Service	Emergency breakdown service support shall be made available at official working hours and within 24 hours of the call.				
Sustainability	Provide explanatory instructions for recyclability at each floor hoppers and informative handouts for the residents. Safety and sustainability training for building operators. Sustainable Waste Management System Plan. Sustainability Progress Report.				

One Time - Cleaning and Fire Safety Check

- Professional system inspection of all fire rated door assemblies based on NFPA guidelines to ensure fire code safety compliance.
- A complete cleaning of the chute, compactor, bins, door assemblies and waste rooms. We use only Biodegradable degreasers and eco-friendly disinfectants that will kill pathogens.
- Safety training for building operators.

One Time - Fire Safety Check

- ✓ Professional system inspection of all fire rated door assemblies based on NFPA guidelines to ensure fire code safety compliance.
- ✓ Safety training for building operators.

How do we do it?

Step #1 Preparatory – Book an appointment that suits you. Our team will come to conduct a thorough inspection for your chute and waste management equipment as per fire safety requirement and functionality.

Step #2 After we complete inspection, we will send you an Inspection Report on fire security, hygiene, repair and replacement requirements.

Step #3 Once you have decided on which issues are to be resolved such as fire code requirements and functionality, hygiene, odor control and fragrance, sustainability and recyclability, your contact is ready.

Step #4 Our team will immediately come to the site and remove and replace the faulty equipment, and undertake the necessary major repairs (certain components may require immediate replacement). We will also bring temporary waste disposal bins to make sure residents have no inconvenience while your system is under maintenance.

Step #5 Once the safety precautions are taken, the crew will start thorough degreasing and hot water cleaning of the chute and waste management equipment. Meanwhile all the hopper doors and intakes will be cleaned with pressurized water, foam and brush. After the cleaning is completed, the chute and all hot spot surfaces such as doorknobs, handles and press buttons will be disinfected.

Step #6 All of the temporary waste bins will be removed and taken for disposal. All garbage bins will be cleaned and disinfected. The waste room will also be cleaned and disinfected. Odor control and fragrance solution will be installed in the garbage room.

Step #7 A member of our staff will make a final check and photograph each resolved issues. As a part of your sustainability program, recycling and hazardous waste bins will be placed in the required areas. We will provide explanatory instructions for recyclability at each floor hoppers and distribute informative handouts for the users. A preventive safety and efficient sustainability training will be given to the building operators.

Step #8 Lastly, we will issue a completion report that the system is safe to use according to all mandatory standards of operation and safety.

Step #9 Within the periodic maintenance program, we will be coming to your site to maintain your systems, collect your recyclables and hazardous waste.

Pneumatic Chutes

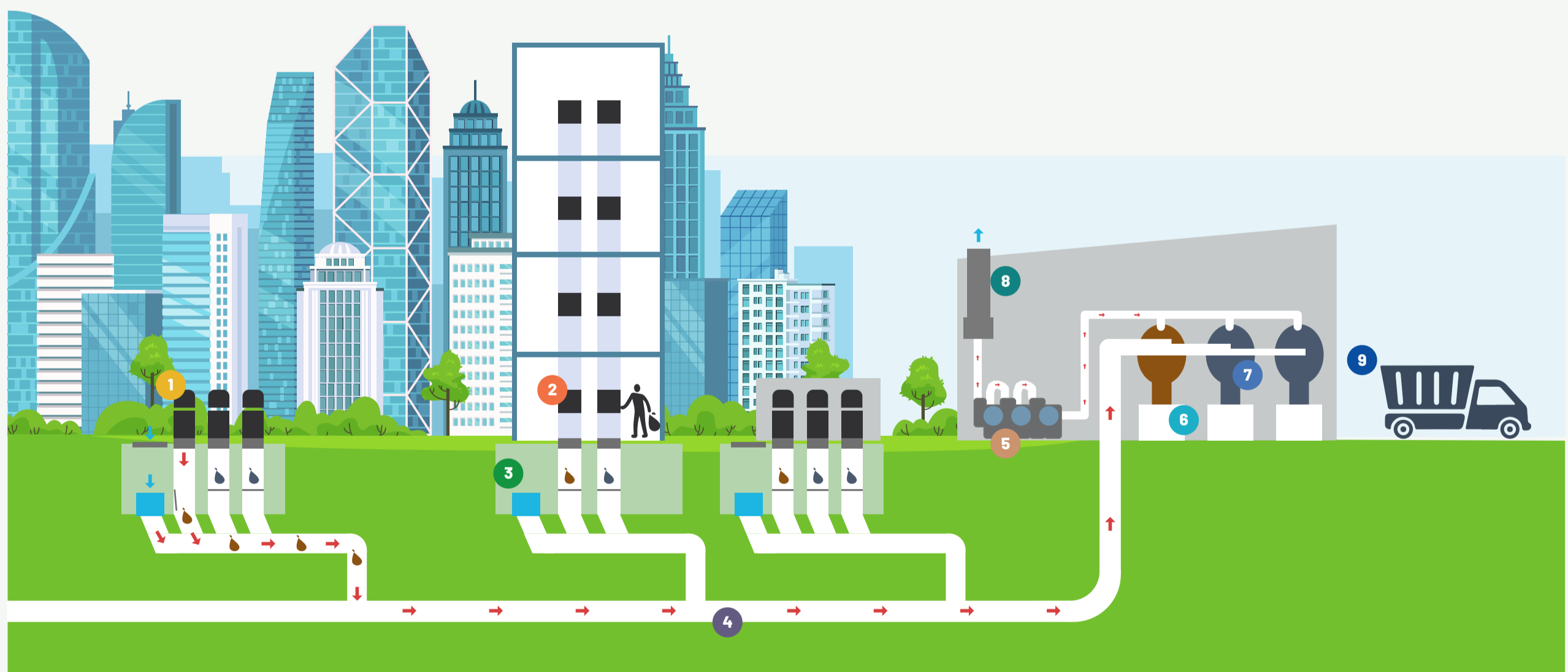
We aim to achieve a sustainable, environmentally friendly waste management system, tailor made for today's urban landscape.

Our underground system can handle multiple waste streams from the same pipe network, enabling automatic and separate collection of waste and recyclables. Modern day waste management systems must be incorporated in the design stages of any new building project.

The stationary pneumatic refuse collection system facilitates the garbage disposal down the chutes to be transported by negative pressure and subsequently compacted in closed containers. The system virtually eliminates the conditions in which unhealthy bacteria, as well as unwanted odors and insects prosper. Unaesthetic garbage containers will be a thing of the past.

Designed to be ergonomic and easy to operate

- ✓ Hot Dip Galvanized chase, Stainless Steel Handle, 304 or 316 4B Finish leaf and frame.
- ✓ Self-closes slowly and silently.
- ✓ 24V Electric Strike and Stainless Steel Press Buttons with unique Led Indicator Lights.



- | | |
|---|---------------------------|
| 1 Outdoor Inlet | 6 Refuse Press Compactors |
| 2 3D Volume Controlled Hopper Chute Doors | 7 Cyclones |
| 3 Waste Room | 8 Ventilation |
| 4 Underground Pipe Network | 9 Mobile Transportation |
| 5 Odor Treatment | |



DownWaste develops waste disposal, sorting, recycling and handling solutions that improve the efficiency in urban areas. Wide range of products we offer contribute to environment and make waste management more profitable.



Manufacturing Sites

Northern Metal San. Tic. Ltd. Şti.
5305 No: 114/A Yunusemre,
Manisa, Turkey

Dosteen Doors&Engineering Services LLC

Street No 11 Building No.146,
PLOT : 59 Block 415 Al Mahaj
Al Amerat Sultanate of Oman



Locations

OMAN | TURKEY | QATAR | UAE | UK

Department:

info@downwaste.com

Department:

sales@downwaste.com

Contacts:

UAE : +971 4 258 2321

OMAN : +968 2 487 6600

TURKEY : +90 850 220 7260



Certificates

