



DYNFLOW

**HOOD
DUCT
FANS
TABLES
CABINET**

DYNFLOW KITCHEN

www.saif-qatar.com



TABLE OF CONTENT

DYNFLOW's comprehensive line of kitchen ventilation products are designed to meet the varying needs of commercial kitchens. Whether you are designing a school cafeteria, restaurant, or industrial cooking process, DYNFLOW has the products and resources to meet your ventilation requirements. Additionally, DYNFLOW offers exhaust fans, make-up air units, Dedicated Outdoor Air Systems and more to create a complete, reliable and quality kitchen ventilation system.

I. Application categories.....

1. Exhaust hood
2. Exhaust and makeup hood
3. Condensate hood
4. Tables and Sink

II. Installation categories.....

5. Wall Mount Hood
6. Island Type Hood

III. Options.....

- Decorative Hood
- Light
- Fire suppression system
- Ventilators and Ecology

APPLICATION CATEGORIES

1. EXHAUST HOOD

MODEL #: DF-A-EH

DYNFLOW exhaust hood are designed for both non-grease and grease-laden effluent only without make up air chamber, it can be offered with several options.

Light

Grease traps

Proximity style hood



2. EXHAUST & MAKE-UP HOOD

MODEL #: DF-A-MH

DYNFLOW exhaust hood are designed for both non-grease and grease-laden effluent only with make-up air chamber, it can be offered with several options.

Light

Grease traps

Proximity style hood

Make-up air chamber insulation (25mm)





3. CONDENSATE HOOD

MODEL #: DF-A-CH

The following models include a gutter and have an optional drain connection. Condensate baffle options below.

Model CH1: No baffles. Most economical and flexible in condensate applications. Lighting options available.

Model CH2: One baffle. Designed for moderate condensation applications. Great for vertical door dishwasher applications. Lighting options available.

Model CH3: Two baffles. Designed for heavy condensate applications.

Model Number Code

The Model Number Code is designed to completely identify the unit. The correct code letters must be specified to designate the configurations and size.

HOOD TYPE II

CHO - Oven

CH1 - Condensate - No Baffle

CH2 - Condensate - Single Baffle

CH3 - Condensate - Double Baffle

4. TABLE, SINK, CABINET AND FANS



INSTALLATION CATEGORIES

5. WALL MOUNT HOOD MODEL #: DF-I-WH

DYNFLOW wall canopy hoods are used over cooking equipment that produce heat and grease-laden effluent. Wall canopy hoods are intended to be used when the cooking equipment is placed against a wall. A wide variety of sizing and hood options, along with several accessories, makes DYNFLOW the right choice to meet your design requirements.

- Exhaust only supply air is introduced through ceiling diffusers or external supply plenums (shown on pages 12-14)
- More dimensional flexibility than other manufacturers
- Available as Single-Wall Front (shown above) or Double-Wall Front (inset detail)
- Double-Wall provides one-inch (25 mm), of insulation between the two front panels to eliminate condensation in case of treated fresh is used.

6. ISLAND HOOD MODEL #: DF-I-IH

DYNFLOW-island style canopy hoods are used over cooking equipment that produce heat and grease-laden effluent. Island style canopy hoods are used over one row of cooking equipment placed where no walls exist. Island hoods can be seen from all directions and have four finished stainless-steel sides available in both V-bank and single-bank filter configurations.



OPTIONS: -

DECORATIVE HOOD

DYNFLOW decorative hood can be offered with several designs & Colors according to customer choice.



FIRE SUPPRESSION SYSTEM

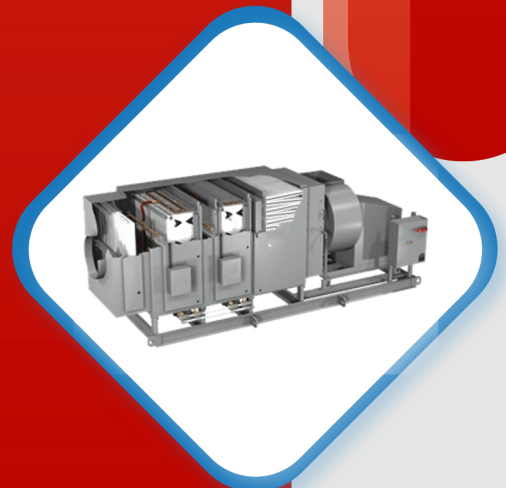
DYNFLOW offers special fire suppression system completely built-in for several type of cooking ranges according to NFPA 17A



VENTILATORS AND ECOLOGY

DYNFLOW offers special kitchen fans with backward curve, fully welded, heavy structure, drain oil and matching with air flow required.

Ecology unit is an important part of the ventilation system and aids in eliminating all odors and effluents emerging from kitchens, especially commercial ones. ensure a clean environment and have a compact design, that befits all kinds of complex kitchen designs and is easy to maintain. High efficiency filtration with active carbon filter, Bag filter and electrostatic filter.



 info@saif-qatar.com
 www.saif-qatar.com

DYNFLOW

DYNFLOW KITCHEN

**SAIF QATAR DUCT-FAB Industrial Area,
Street No.30 ; Gate No.28**

Doha, Qatar - 12438

+974-6650 8394

+974-4417 1230

Saif Qatar Duct FAB

Ar-Rayyan

+974 4417 1230

+974 3373 4794